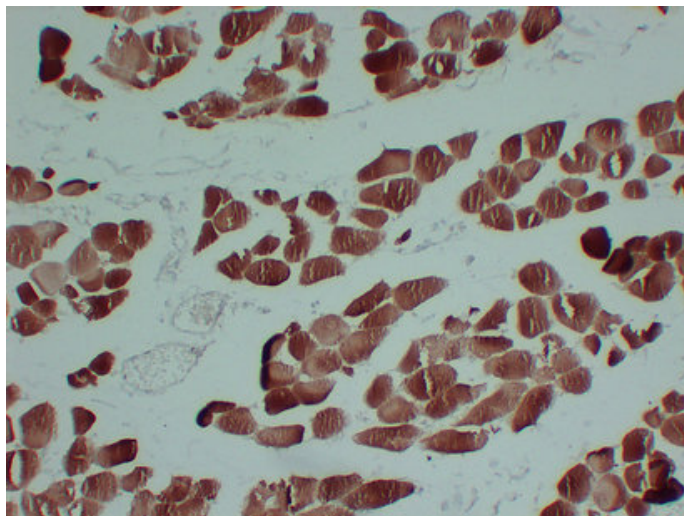




## Actin, sarcomeric muscle (6B2) mouse mAb

Catalog_no :	AM6671
Applications :	IHC-p, WB
Reactivity :	Human
Category :	抗原抗体
Size :	50µl/100µl
Gene_name :	ACTB ACTC1
Protein_name :	Actin, sarcomeric muscle
Humanswissprot_no :	<a href="#">P68133/P68032</a>
Immunogen :	Synthesized peptide derived from human Actin, sarcomeric muscle
Specificity :	This antibody detects endogenous levels of human Actin, sarcomeric muscle
Formulation :	Liquid in PBS containing 50% glycerol, 0.5% BSA and 0.02% sodium azide.
Source :	Mouse/IgG1, Kappa
Dilution :	IHC-p 1:100-500 , WB 1:500-2000
Purification :	The antibody was affinity-purified from mouse ascites by affinity-chromatography using specific immunogen.
Concentration :	1 mg/ml
Storage_stability :	-20°C/1 year
Notes :	muscle system process, muscle contraction, cytoskeleton organization, actin filament organization, muscle organ development, skeletal muscle tissue development, regulation of cell size, response to mechanical stimulus, response to abiotic stimulus, r

## Product Images



Immunohistochemical analysis of paraffin-embedded skeletal muscle. 1, Antibody was diluted at 1:200(4°,overnight). 2, Citrate buffer of pH6.0 was used for antigen retrieval. 3,Secondary antibody was diluted at 1:200(room temperature, 30min).