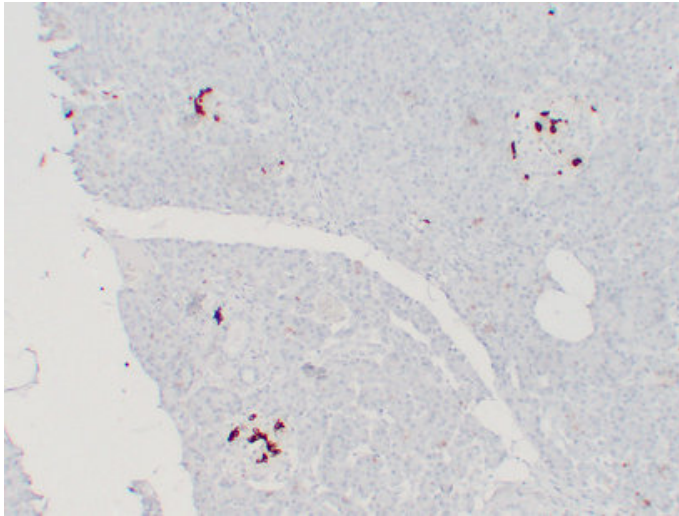




## Somatostatin (2L10) mouse mAb

Catalog_no :	AM6218
Applications :	IHC-p
Reactivity :	Human
Category :	抗原抗体
Size :	50μl/100μl
Gene_name :	SST
Protein_name :	Somatostatin (Growth hormone release-inhibiting factor) [Cleaved into: Somatostatin-28; Somatostatin-14]
Humanswissprot_no :	<a href="#">P61278</a>
Immunogen :	Synthesized peptide derived from human Somatostatin
Specificity :	This antibody detects endogenous levels of human Somatostatin
Formulation :	Liquid in PBS containing 50% glycerol, 0.5% BSA and 0.02% sodium azide.
Source :	Mouse/IgG2b, Kappa
Dilution :	IHC-p 1:100-500
Purification :	The antibody was affinity-purified from mouse ascites by affinity-chromatography using specific immunogen.
Concentration :	1 mg/ml
Storage_stability :	-20°C/1 year
Notes :	response to acid, induction of apoptosis, response to osmotic stress, hyperosmotic response, cell surface receptor linked signal transduction, G-protein coupled receptor protein signaling pathway, cell-cell signaling, synaptic transmission, response

## Product Images



Immunohistochemical analysis of paraffin-embedded Pancreas. 1, Antibody was diluted at 1:200(4°,overnight). 2, Citric acid ,pH6.0 was used for antigen retrieval. 3,Secondary antibody was diluted at 1:200(room temperature, 30min).