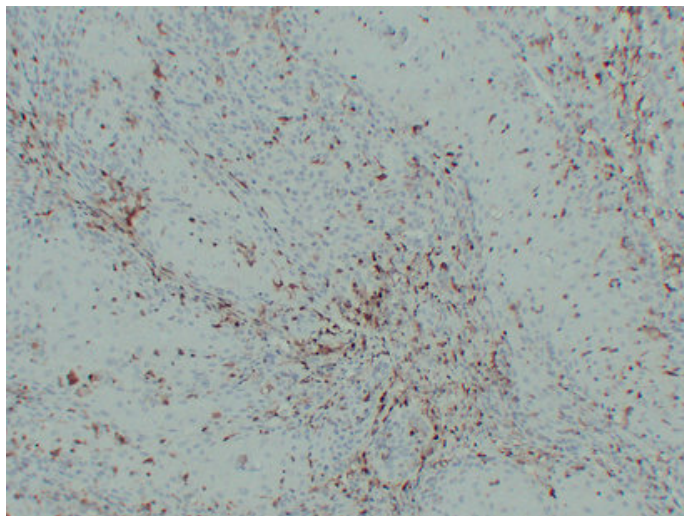




## S100A4 (4T3) mouse mAb

Catalog_no :	AM6216
Applications :	IHC-p
Reactivity :	Human
Category :	抗原抗体
Size :	50µl/100µl
Gene_name :	S100A4 CAPL MTS1
Protein_name :	Protein S100-A4 (Calvasculin) (Metastasin) (Placental calcium-binding protein) (Protein Mts1) (S100 calcium-binding protein A4)
Humanswissprot_no :	<a href="#">P26447</a>
Immunogen :	Synthesized peptide derived from human S100A4
Specificity :	This antibody detects endogenous levels of human S100A4
Formulation :	Liquid in PBS containing 50% glycerol, 0.5% BSA and 0.02% sodium azide.
Source :	Mouse/IgG1, Kappa
Dilution :	IHC-p 1:100-500
Purification :	The antibody was affinity-purified from mouse ascites by affinity-chromatography using specific immunogen.
Concentration :	1 mg/ml
Storage_stability :	-20°C/1 year
Notes :	cell morphogenesis, cell morphogenesis involved in differentiation, epithelial to mesenchymal transition, mesenchymal cell development, cellular component morphogenesis, mesenchymal cell differentiation, mesenchyme development,

## Product Images



Immunohistochemical analysis of paraffin-embedded Cutaneous squamous cell carcinoma. 1, Antibody was diluted at 1:200(4°,overnight). 2, Citric acid ,pH6.0 was used for antigen retrieval. 3,Secondary antibody was diluted at 1:200(room temperature, 30min).