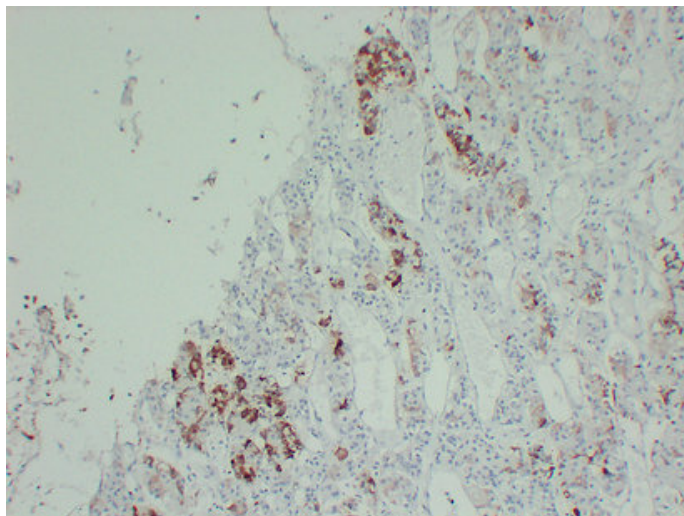




Prolactin (5V3) mouse mAb

Catalog_no :	AM6484
Applications :	IHC-p
Reactivity :	Human
Category :	抗原抗体
Size :	50μl/100μl
Gene_name :	PRL
Protein_name :	Prolactin (PRL)
Humanswissprot_no :	P01236
Immunogen :	Synthesized peptide derived from human Prolactin
Specificity :	This antibody detects endogenous levels of human Prolactin
Formulation :	Liquid in PBS containing 50% glycerol, 0.5% BSA and 0.02% sodium azide.
Source :	Mouse/IgG3, Kappa
Dilution :	IHC-p 1:100-500
Purification :	The antibody was affinity-purified from mouse ascites by affinity-chromatography using specific immunogen.
Concentration :	1 mg/ml
Storage_stability :	-20°C/1 year
Notes :	protein import into nucleus, translocation, protein targeting, protein import into nucleus, intracellular protein transport,nucleocytoplasmic transport, cell surface receptor linked signal transduction, intracellular signaling cascade, protein kinase

Product Images



Immunohistochemical analysis of paraffin-embedded Hyperprolactinemia. 1, Antibody was diluted at 1:200(4°,overnight). 2, TRIS-EDTA of pH8.0 was used for antigen retrieval. 3,Secondary antibody was diluted at 1:200(room temperature, 30min).