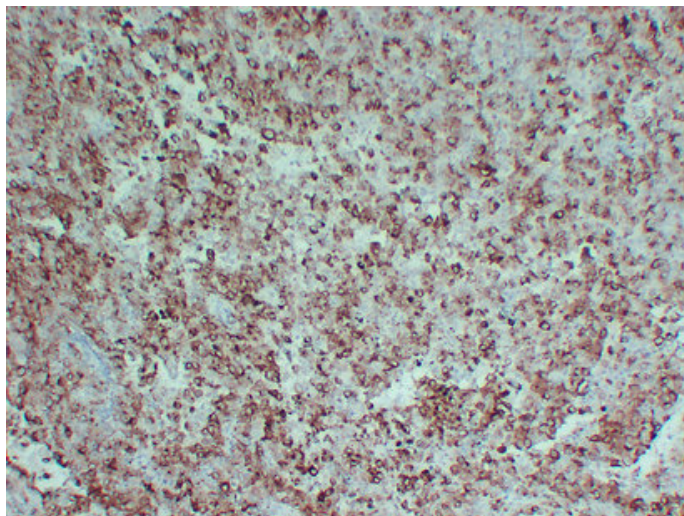




PMEL (4U5) mouse mAb

Catalog_no :	AM6561
Applications :	IHC-p
Reactivity :	Human
Category :	抗原抗体
Size :	50µl/100µl
Gene_name :	PMEL D12S53E PMEL17 SILV
Protein_name :	Melanocyte protein PMEL (ME20-M) (ME20M) (Melanocyte protein Pmel 17) (Melanocytes lineage-specific antigen GP100) (Melanoma-associated ME20 antigen) (P1) (P100) (Premelanosome protein) (Silver locus protein homolog) [Cleaved into: M-alpha (95 kDa me
Humanswissprot_no :	P40967
Immunogen :	Synthesized peptide derived from human PMEL
Specificity :	This antibody detects endogenous levels of human PMEL
Formulation :	Liquid in PBS containing 50% glycerol, 0.5% BSA and 0.02% sodium azide.
Source :	Mouse/IgG2b, Kappa
Dilution :	IHC-p 1:100-500
Purification :	The antibody was affinity-purified from mouse ascites by affinity-chromatography using specific immunogen.
Concentration :	1 mg/ml
Storage_stability :	-20°C/1 year

Product Images



Immunohistochemical analysis of paraffin-embedded Malignant melanoma. 1, Antibody was diluted at 1:200(4°,overnight). 2, Citrate buffer of pH6.0 was used for antigen retrieval. 3,Secondary antibody was diluted at 1:200(room temperature, 30min).