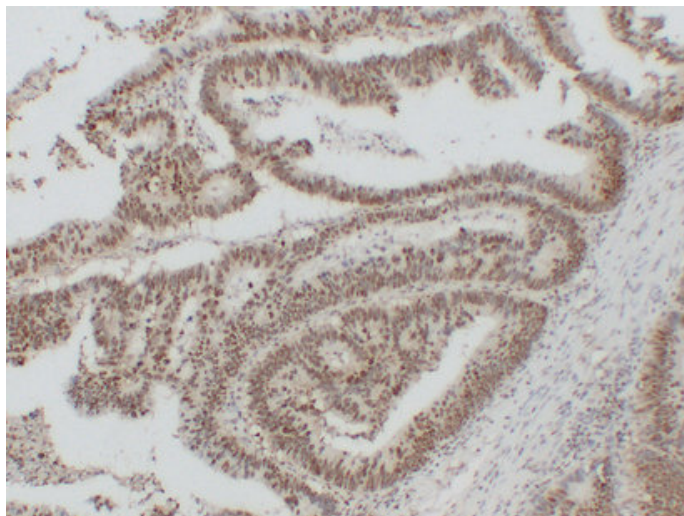




Nucleophosmin (8B3) mouse mAb

Catalog_no :	AM6591
Applications :	IHC-p,WB
Reactivity :	Human
Category :	抗原抗体
Size :	50µl/100µl
Gene_name :	NPM1 NPM
Protein_name :	Nucleophosmin (NPM) (Nucleolar phosphoprotein B23) (Nucleolar protein NO38) (Numatrin)
Humanswissprot_no :	P06748
Immunogen :	Synthesized peptide derived from human Nucleophosmin
Specificity :	This antibody detects endogenous levels of human Nucleophosmin
Formulation :	Liquid in PBS containing 50% glycerol, 0.5% BSA and 0.02% sodium azide.
Source :	Mouse/IgG1, Kappa
Dilution :	IHC-p 1:100-500 , WB 1:500-2000
Purification :	The antibody was affinity-purified from mouse ascites by affinity-chromatography using specific immunogen.
Concentration :	1 mg/ml
Storage_stability :	-20°C/1 year
Notes :	ribosome export from nucleus, ribosomal large subunit export from nucleus, ribosomal small subunit export from nucleus, microtubule cytoskeleton organization, DNA packaging, chromatin organization, chromatin assembly or disassembly, nucleosome assemb

Product Images



Immunohistochemical analysis of paraffin-embedded Colon carcinoma. 1, Antibody was diluted at 1:200(4°,overnight). 2, Citrate buffer of pH6.0 was used for antigen retrieval. 3,Secondary antibody was diluted at 1:200(room temperature, 30min).