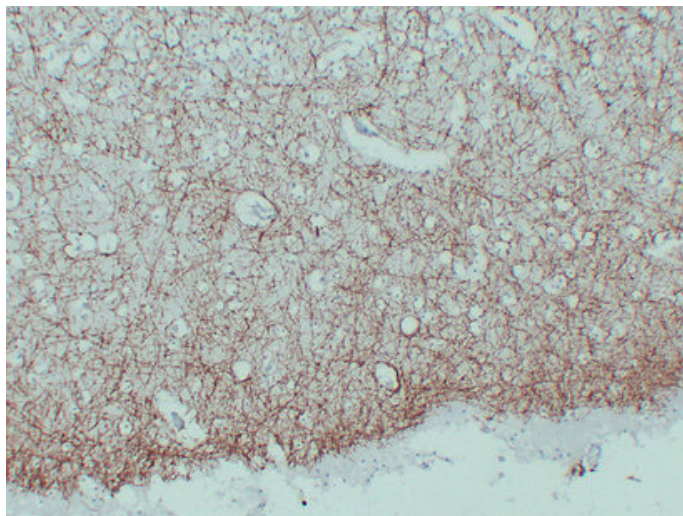


Myelin Basic Protein(MBP) (9X6) mouse mAb

Catalog_no :	AM6201
Applications :	IHC-p
Reactivity :	Human
Category :	抗原抗体
Size :	50µl/100µl
Gene_name :	MBP
Protein_name :	Myelin basic protein (MBP) (Myelin A1 protein) (Myelin membrane encephalitogenic protein)
Humanswissprot_no :	P02686
Immunogen :	Synthesized peptide derived from human Myelin Basic Protein(MBP)
Specificity :	This antibody detects endogenous levels of human Myelin Basic Protein(MBP)
Formulation :	Liquid in PBS containing 50% glycerol, 0.5% BSA and 0.02% sodium azide.
Source :	Mouse/IgG1, Kappa
Dilution :	IHC-p 1:100-500
Purification :	The antibody was affinity-purified from mouse ascites by affinity-chromatography using specific immunogen.
Concentration :	1 mg/ml
Storage_stability :	-20°C/1 year
Notes :	regulation of action potential, cellular ion homeostasis, immune response, cell-cell signaling, synaptic transmission, ensheathment of neurons, axon ensheathment, negative regulation of cell development, regulation of cell morphogenesis involved in di

Product Images



Immunohistochemical analysis of paraffin-embedded Brain. 1, Antibody was diluted at 1:200(4°,overnight). 2, TRIS-EDTA of pH8.0 was used for antigen retrieval. 3,Secondary antibody was diluted at 1:200(room temperature, 30min).