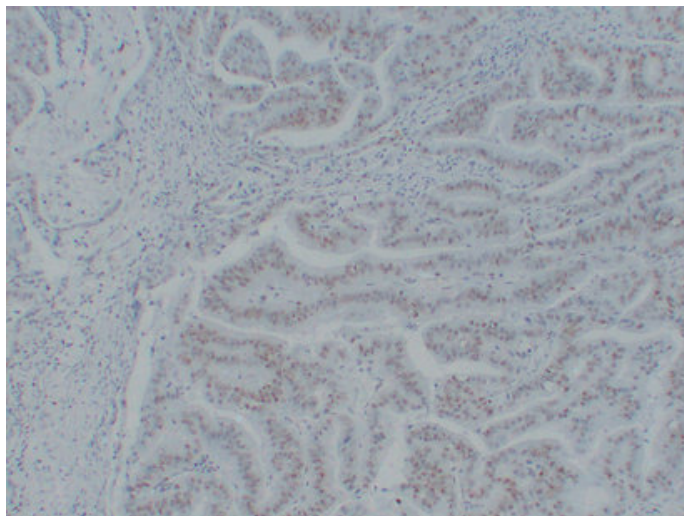


MutS Protein Homolog 6(MSH6) (7W1) mouse mAb

Catalog_no :	AM6196
Applications :	IHC-p,WB,IF
Reactivity :	Human
Category :	抗原抗体
Size :	50µl/100µl
Gene_name :	MSH6 GTBP
Protein_name :	DNA mismatch repair protein Msh6 (hMSH6) (G/T mismatch-binding protein) (GTBP) (GTMBP) (MutS-alpha 160 kDa subunit) (p160)
Humanswissprot_no :	P52701
Immunogen :	Synthesized peptide derived from human MutS Protein Homolog 6(MSH6)
Specificity :	This antibody detects endogenous levels of human MutS Protein Homolog 6(MSH6)
Formulation :	Liquid in PBS containing 50% glycerol, 0.5% BSA and 0.02% sodium azide.
Source :	Mouse/IgG1, Kappa
Dilution :	IHC-p 1:100-500 , WB 1:500-2000 , IF 1:500-200
Purification :	The antibody was affinity-purified from mouse ascites by affinity-chromatography using specific immunogen.
Concentration :	1 mg/ml
Storage_stability :	-20°C/1 year
Notes :	regulation of DNA recombination, M phase, meiotic mismatch repair, cell activation, somatic diversification of immune receptors, somatic recombination of immunoglobulin genes during immune response, somatic diversification of immunoglobulins during i

Product Images



Immunohistochemical analysis of paraffin-embedded Colon carcinoma. 1, Antibody was diluted at 1:200(4°,overnight). 2, TRIS-EDTA of pH8.0 was used for antigen retrieval. 3,Secondary antibody was diluted at 1:200(room temperature, 30min).