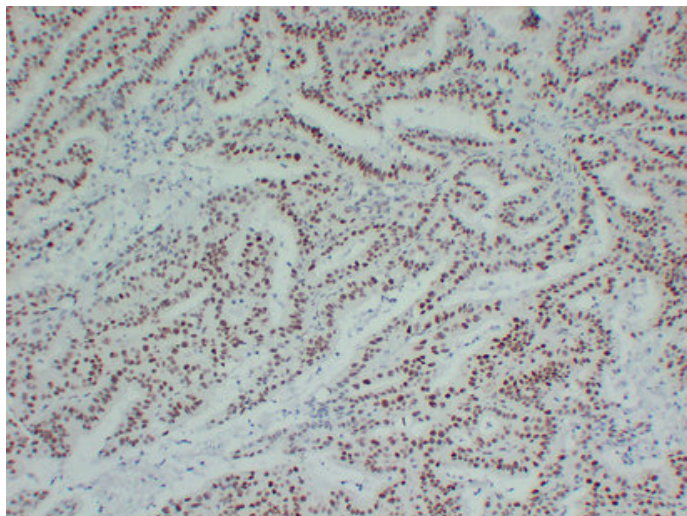




## MutL Protein Homolog 1(MLH1) (2C3) mouse mAb

Catalog_no :	AM6124
Applications :	IHC-p, WB, IF
Reactivity :	Human
Category :	抗原抗体
Size :	50μl/100μl
Gene_name :	MLH1 COCA2
Protein_name :	DNA mismatch repair protein Mlh1 (MutL protein homolog 1)
Humanswissprot_no :	<a href="#">P40692</a>
Immunogen :	Synthesized peptide derived from human MutL Protein Homolog 1(MLH1)
Specificity :	This antibody detects endogenous levels of human MutL Protein Homolog 1(MLH1)
Formulation :	Liquid in PBS containing 50% glycerol, 0.5% BSA and 0.02% sodium azide.
Source :	Mouse/IgG1, Kappa
Dilution :	IHC-p 1:100-500 , WB 1:500-2000 , IF 1:500-200
Purification :	The antibody was affinity-purified from mouse ascites by affinity-chromatography using specific immunogen.
Concentration :	1 mg/ml
Storage_stability :	-20°C/1 year
Notes :	regulation of DNA recombination, regulation of mitotic recombination, microtubule cytoskeleton organization, pachytene, M phase, nuclear-transcribed mRNA catabolic process, deadenylation-dependent decay, nuclear-transcribed mRNA poly(A) tail shortenin

## Product Images



Immunohistochemical analysis of paraffin-embedded Colon carcinoma. 1, Antibody was diluted at 1:200(4°,overnight). 2, Citric acid ,pH6.0 was used for antigen retrieval. 3,Secondary antibody was diluted at 1:200(room temperature, 30min).