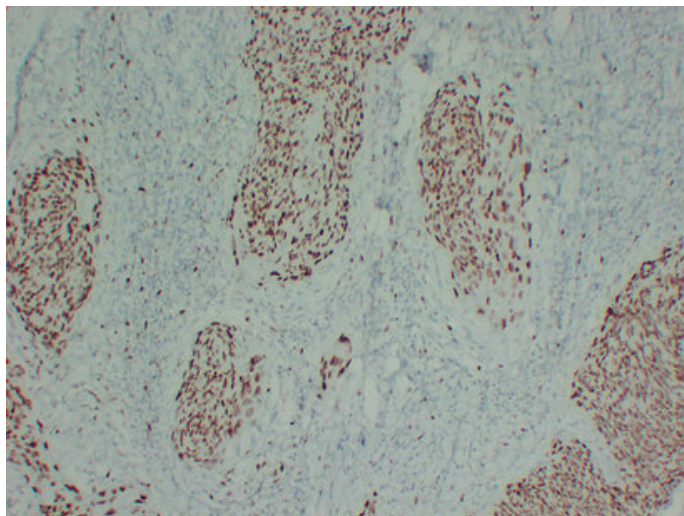




MCM2 (9B5) mouse mAb

| | |
|---------------------|--|
| Catalog_no : | AM6642 |
| Applications : | IHC-p,WB |
| Reactivity : | Human |
| Category : | 抗原抗体 |
| Size : | 50μl/100μl |
| Gene_name : | MCM2 BM28 CCNL1 CDCL1 KIAA0030 |
| Protein_name : | DNA replication licensing factor MCM2 (EC 3.6.4.12) (Minichromosome maintenance protein 2 homolog) (Nuclear protein BM28) |
| Humanswissprot_no : | P49736 |
| Immunogen : | Synthesized peptide derived from human MCM2 |
| Specificity : | This antibody detects endogenous levels of human MCM2 |
| Formulation : | Liquid in PBS containing 50% glycerol, 0.5% BSA and 0.02% sodium azide. |
| Source : | Mouse/IgG1, Kappa |
| Dilution : | IHC-p 1:100-500 , WB 1:500-2000 |
| Purification : | The antibody was affinity-purified from mouse ascites by affinity-chromatography using specific immunogen. |
| Concentration : | 1 mg/ml |
| Storage_stability : | -20°C/1 year |
| Notes : | DNA metabolic process, DNA replication, DNA-dependent DNA replication, DNA unwinding during replication, DNA replication initiation, DNA packaging, chromatin organization, chromatin assembly or disassembly, nucleosome assembly, transcription, cell cy |

Product Images



Immunohistochemical analysis of paraffin-embedded Cervical squamous carcinoma. 1, Antibody was diluted at 1:200(4°,overnight). 2, TRIS-EDTA of pH8.0 was used for antigen retrieval. 3,Secondary antibody was diluted at 1:200(room temperature, 30min).