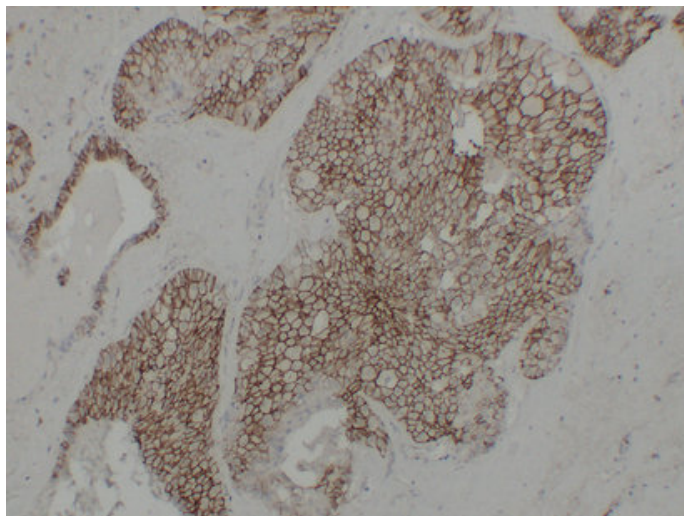




## KSP-Cadherin (7E10) mouse mAb

Catalog_no :	AM6640
Applications :	IHC-p
Reactivity :	Human
Category :	抗原抗体
Size :	50μl/100μl
Gene_name :	CDH16 UNQ695/PRO1340
Protein_name :	Cadherin-16 (Kidney-specific cadherin) (Ksp-cadherin)
Humanswissprot_no :	<a href="#">O75309</a>
Immunogen :	Synthesized peptide derived from human KSP-Cadherin
Specificity :	This antibody detects endogenous levels of human KSP-Cadherin
Formulation :	Liquid in PBS containing 50% glycerol, 0.5% BSA and 0.02% sodium azide.
Source :	Mouse/IgG2a, Kappa
Dilution :	IHC-p 1:100-500
Purification :	The antibody was affinity-purified from mouse ascites by affinity-chromatography using specific immunogen.
Concentration :	1 mg/ml
Storage_stability :	-20°C/1 year
Notes :	cell adhesion, homophilic cell adhesion, cell-cell adhesion, biological adhesion,

## Product Images



Immunohistochemical analysis of paraffin-embedded Chromophobe cell renal carcinoma. 1, Antibody was diluted at 1:200(4°,overnight). 2, TRIS-EDTA of pH8.0 was used for antigen retrieval. 3,Secondary antibody was diluted at 1:200(room temperature, 30min).