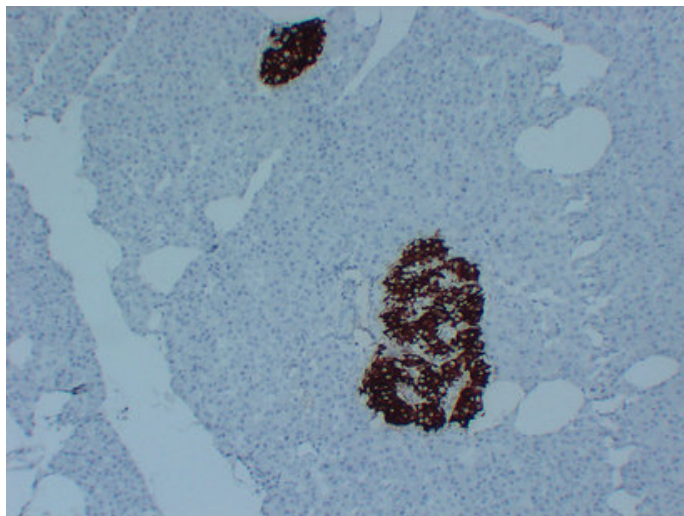




Insulin (7Y5) mouse mAb

Catalog_no :	AM6121
Applications :	IHC-p
Reactivity :	Human
Category :	抗原抗体
Size :	50µl/100µl
Gene_name :	INS
Protein_name :	Insulin [Cleaved into: Insulin B chain; Insulin A chain]
Humanswissprot_no :	P01308
Immunogen :	Synthesized peptide derived from human Insulin
Specificity :	This antibody detects endogenous levels of human Insulin
Formulation :	Liquid in PBS containing 50% glycerol, 0.5% BSA and 0.02% sodium azide.
Source :	Mouse/IgG2b, Kappa
Dilution :	IHC-p 1:100-500
Purification :	The antibody was affinity-purified from mouse ascites by affinity-chromatography using specific immunogen.
Concentration :	1 mg/ml
Storage_stability :	-20°C/1 year
Notes :	MAPKKK cascade, skeletal system development, ossification, regulation of cell growth, osteoblast differentiation, cell activation, regulation of cytokine production, regulation of protein amino acid phosphorylation, positive regulation of protein ami

Product Images



Immunohistochemical analysis of paraffin-embedded Pancreas. 1, Antibody was diluted at 1:200(4°,overnight). 2, Citric acid ,pH6.0 was used for antigen retrieval. 3,Secondary antibody was diluted at 1:200(room temperature, 30min).