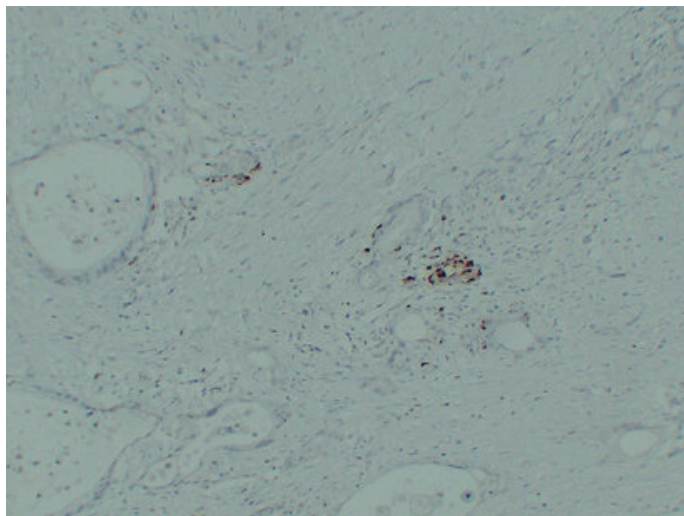


IGF-2 (1A3) mouse mAb

Catalog_no :	AM6584
Applications :	IHC-p
Reactivity :	Human
Category :	抗原抗体
Size :	50µl/100µl
Gene_name :	IGF2 PP1446
Protein_name :	Insulin-like growth factor II (IGF-II) (Somatomedin-A) [Cleaved into: Insulin-like growth factor II; Insulin-like growth factor II Ala-25 Del; Preptin]
Humanswissprot_no :	P01344
Immunogen :	Synthesized peptide derived from human IGF-2
Specificity :	This antibody detects endogenous levels of human IGF-2
Formulation :	Liquid in PBS containing 50% glycerol, 0.5% BSA and 0.02% sodium azide.
Source :	Mouse/IgG2b, Kappa
Dilution :	IHC-p 1:100-500
Purification :	The antibody was affinity-purified from mouse ascites by affinity-chromatography using specific immunogen.
Concentration :	1 mg/ml
Storage_stability :	-20°C/1 year
Notes :	MAPKKK cascade, skeletal system development, ossification, regulation of cell growth, osteoblast differentiation, cell activation, regulation of cytokine production, regulation of protein amino acid phosphorylation, positive regulation of protein ami

Product Images



Immunohistochemical analysis of paraffin-embedded Pancreatic carcinoma. 1, Antibody was diluted at 1:200(4°,overnight). 2, TRIS-EDTA of pH8.0 was used for antigen retrieval. 3,Secondary antibody was diluted at 1:200(room temperature, 30min).