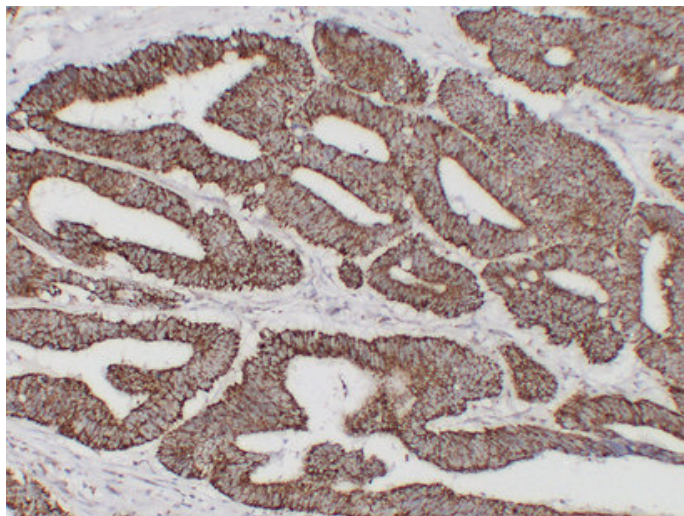




HSP60 (8Q5) mouse mAb

Catalog_no :	AM6067
Applications :	IHC-p,WB,IF
Reactivity :	Human
Category :	抗原抗体
Size :	50μl/100μl
Gene_name :	HSPD1 HSP60
Protein_name :	60 kDa heat shock protein, mitochondrial (60 kDa chaperonin) (Chaperonin 60) (CPN60) (Heat shock protein 60) (HSP-60) (Hsp60) (HuCHA60) (Mitochondrial matrix protein P1) (P60 lymphocyte protein)
Humanswissprot_no :	P10809
Immunogen :	Synthesized peptide derived from human HSP60
Specificity :	This antibody detects endogenous levels of human HSP60
Formulation :	Liquid in PBS containing 50% glycerol, 0.5% BSA and 0.02% sodium azide.
Source :	Mouse/IgG1, Kappa
Dilution :	IHC-p 1:100-500 , WB 1:500-2000 , IF 1:500-200
Purification :	The antibody was affinity-purified from mouse ascites by affinity-chromatography using specific immunogen.
Concentration :	1 mg/ml
Storage_stability :	-20°C/1 year
Notes :	cell activation, cytokine production, regulation of cytokine production, positive regulation of cytokine production,somatic diversification of immune receptors, somatic recombination of immunoglobulin genes during immune response,somatic diversificat

Product Images



Immunohistochemical analysis of paraffin-embedded Colon carcinoma. 1, Antibody was diluted at 1:200(4°,overnight). 2, Citric acid ,pH6.0 was used for antigen retrieval. 3,Secondary antibody was diluted at 1:200(room temperature, 30min).