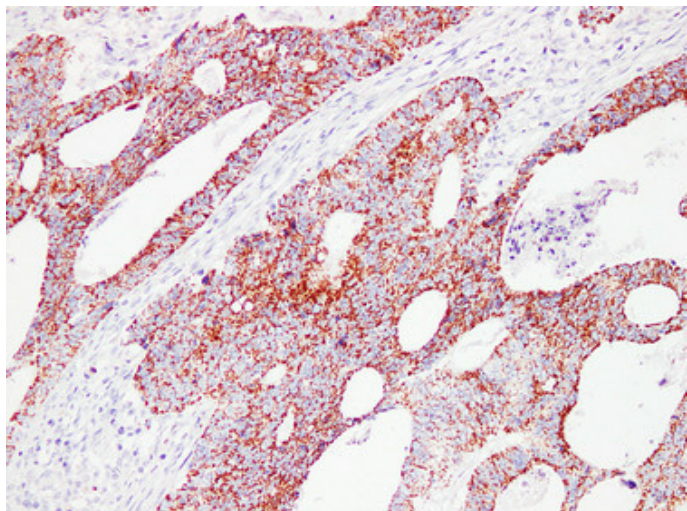




## HSP60 (2G1) mouse mAb

Catalog_no :	AM6187
Applications :	IHC-p,IF
Reactivity :	Human
Category :	抗原抗体
Size :	50μl/100μl
Gene_name :	HSPD1 HSP60
Protein_name :	60 kDa heat shock protein, mitochondrial (60 kDa chaperonin) (Chaperonin 60) (CPN60) (Heat shock protein 60) (HSP-60) (Hsp60) (HuCHA60) (Mitochondrial matrix protein P1) (P60 lymphocyte protein)
Humanswissprot_no :	<a href="#">P10809</a>
Immunogen :	Synthesized peptide derived from human HSP60
Specificity :	This antibody detects endogenous levels of human HSP60
Formulation :	Liquid in PBS containing 50% glycerol, 0.5% BSA and 0.02% sodium azide.
Source :	Mouse/IgG1, Kappa
Dilution :	IHC-p 1:100-500 , IF 1:500-200
Purification :	The antibody was affinity-purified from mouse ascites by affinity-chromatography using specific immunogen.
Concentration :	1 mg/ml
Storage_stability :	-20°C/1 year
Notes :	cell activation, cytokine production, regulation of cytokine production, positive regulation of cytokine production,somatic diversification of immune receptors, somatic recombination of immunoglobulin genes during immune response,somatic diversificat

## Product Images



Immunohistochemical analysis of paraffin-embedded Colon carcinoma. 1, Antibody was diluted at 1:200(4°,overnight). 2, Citric acid ,pH6.0 was used for antigen retrieval. 3,Secondary antibody was diluted at 1:200(room temperature, 30min).