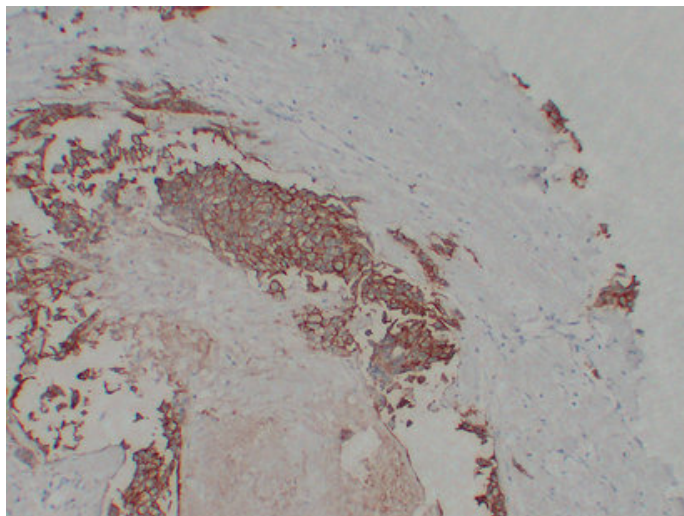




Her-2(c-erbB-2) (8A5) mouse mAb

Catalog_no :	AM6637
Applications :	IHC-p,WB
Reactivity :	Human
Category :	抗原抗体
Size :	50μl/100μl
Gene_name :	ERBB2 HER2 MLN19 NEU NGL
Protein_name :	Receptor tyrosine-protein kinase erbB-2 (EC 2.7.10.1) (Metastatic lymph node gene 19 protein) (MLN 19) (Proto-oncogene Neu) (Proto-oncogene c-ErbB-2) (Tyrosine kinase-type cell surface receptor HER2) (p185erbB2) (CD antigen CD340)
Humanswissprot_no :	P04626
Immunogen :	Synthesized peptide derived from human Her-2(c-erbB-2)
Specificity :	This antibody detects endogenous levels of human Her-2(c-erbB-2)
Formulation :	Liquid in PBS containing 50% glycerol, 0.5% BSA and 0.02% sodium azide.
Source :	Mouse/IgG1, Kappa
Dilution :	IHC-p 1:100-500 , WB 1:500-2000
Purification :	The antibody was affinity-purified from mouse ascites by affinity-chromatography using specific immunogen.
Concentration :	1 mg/ml
Storage_stability :	-20°C/1 year
Molecular Weight :	180KD
Notes :	cell morphogenesis, cell morphogenesis involved in differentiation, regulation of action potential, liver development,negative regulation of immune system process, regulation of leukocyte activation, negative regulation of leukocyte activation, prote

Product Images



Immunohistochemical analysis of paraffin-embedded Breast carcinoma. 1, Antibody was diluted at 1:200(4°,overnight). 2, TRIS-EDTA of pH8.0 was used for antigen retrieval. 3,Secondary antibody was diluted at 1:200(room temperature, 30min).