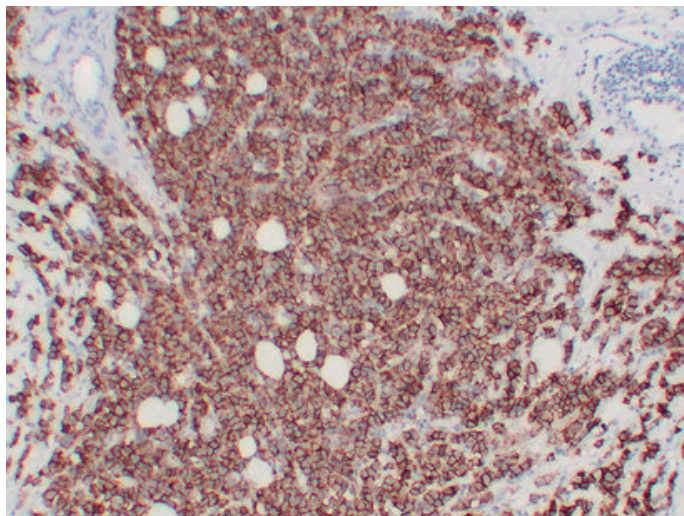




## Her-2(c-erbB-2) (2Y1) mouse mAb

Catalog_no :	AM6186
Applications :	IHC-p
Reactivity :	Human
Category :	抗原抗体
Size :	50μl/100μl
Gene_name :	ERBB2 HER2 MLN19 NEU NGL
Protein_name :	Receptor tyrosine-protein kinase erbB-2 (EC 2.7.10.1) (Metastatic lymph node gene 19 protein) (MLN 19) (Proto-oncogene Neu) (Proto-oncogene c-ErbB-2) (Tyrosine kinase-type cell surface receptor HER2) (p185erbB2) (CD antigen CD340)
Humanswissprot_no :	<a href="#">P04626</a>
Immunogen :	Synthesized peptide derived from human Her-2(c-erbB-2)
Specificity :	This antibody detects endogenous levels of human Her-2(c-erbB-2)
Formulation :	Liquid in PBS containing 50% glycerol, 0.5% BSA and 0.02% sodium azide.
Source :	Mouse/IgG2b, Kappa
Dilution :	IHC-p 1:100-500
Purification :	The antibody was affinity-purified from mouse ascites by affinity-chromatography using specific immunogen.
Concentration :	1 mg/ml
Storage_stability :	-20°C/1 year
Molecular Weight :	180KD
Notes :	cell morphogenesis, cell morphogenesis involved in differentiation, regulation of action potential, liver development,negative regulation of immune system process, regulation of leukocyte activation, negative regulation of leukocyte activation, prote

## Product Images



Immunohistochemical analysis of paraffin-embedded Breast carcinoma. 1, Antibody was diluted at 1:200(4°,overnight). 2, Tris-EDTA,pH8.0 was used for antigen retrieval. 3,Secondary antibody was diluted at 1:200(room temperature, 30min).