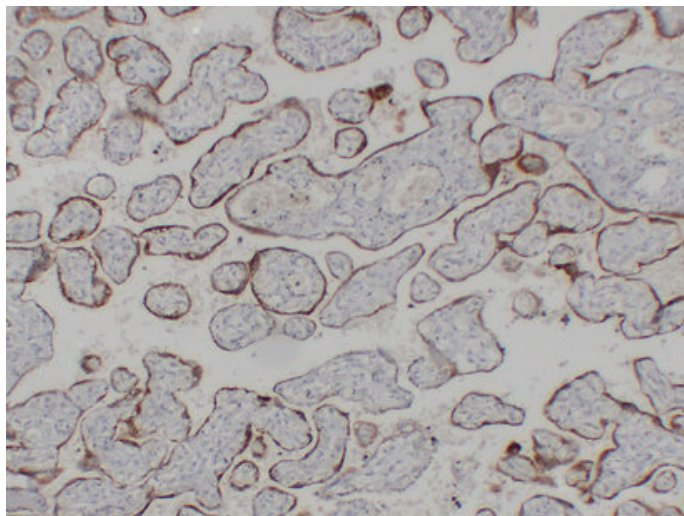




hCG β (2J1) mouse mAb

| | |
|---------------------|--|
| Catalog_no : | AM6185 |
| Applications : | IHC-p |
| Reactivity : | Human |
| Category : | 抗原抗体 |
| Size : | 50 μ l/100 μ l |
| Gene_name : | CGB CGB3; CGB5; CGB7; CGB8 |
| Protein_name : | Choriogonadotropin subunit beta (CG-beta) (Chorionic gonadotrophin chain beta) |
| Humanswissprot_no : | P01233 |
| Immunogen : | Synthesized peptide derived from human hCG β |
| Specificity : | This antibody detects endogenous levels of human hCG β |
| Formulation : | Liquid in PBS containing 50% glycerol, 0.5% BSA and 0.02% sodium azide. |
| Source : | Mouse IgG |
| Dilution : | IHC-p 1:100-500 |
| Purification : | The antibody was affinity-purified from mouse ascites by affinity-chromatography using specific immunogen. |
| Concentration : | 1 mg/ml |
| Storage_stability : | -20°C/1 year |
| Notes : | apoptosis, cell surface receptor linked signal transduction, G-protein coupled receptor protein signaling pathway, cell-cell signaling, gamete generation, female gamete generation, cell death, programmed cell death, death, sexual reproduction, multic |

Product Images



Immunohistochemical analysis of paraffin-embedded Placenta. 1, Antibody was diluted at 1:200(4°,overnight). 2, Citric acid ,pH6.0 was used for antigen retrieval. 3,Secondary antibody was diluted at 1:200(room temperature, 30min).