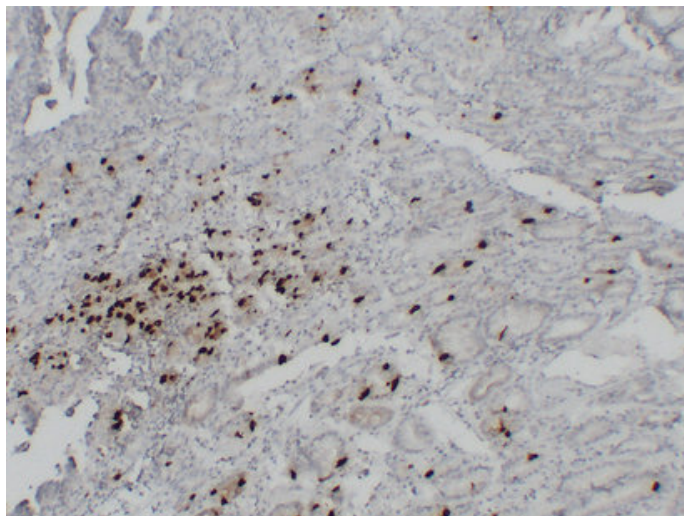




Gastrin (6F5) mouse mAb

| | |
|---------------------|---|
| Catalog_no : | AM6181 |
| Applications : | IHC-p |
| Reactivity : | Human |
| Category : | 抗原抗体 |
| Size : | 50µl/100µl |
| Gene_name : | GAST GAS |
| Protein_name : | Gastrin [Cleaved into: Gastrin-71 (Gastrin component I); Gastrin-52 (G52); Big gastrin (Gastrin component II) (Gastrin-34) (G34); Gastrin (Gastrin component III) (Gastrin-17) (G17); Gastrin-14 (G14); Gastrin-6 (G6)] |
| Humanswissprot_no : | P01350 |
| Immunogen : | Synthesized peptide derived from human Gastrin |
| Specificity : | This antibody detects endogenous levels of human Gastrin |
| Formulation : | Liquid in PBS containing 50% glycerol, 0.5% BSA and 0.02% sodium azide. |
| Source : | Mouse/IgG1, Kappa |
| Dilution : | IHC-p 1:100-500 |
| Purification : | The antibody was affinity-purified from mouse ascites by affinity-chromatography using specific immunogen. |
| Concentration : | 1 mg/ml |
| Storage_stability : | -20°C/1 year |
| Notes : | cell surface receptor linked signal transduction, G-protein coupled receptor protein signaling pathway, |

Product Images



Immunohistochemical analysis of paraffin-embedded Gastric adenocarcinoma. 1, Antibody was diluted at 1:200(4°,overnight). 2, TRIS-EDTA of pH8.0 was used for antigen retrieval. 3,Secondary antibody was diluted at 1:200(room temperature, 30min).