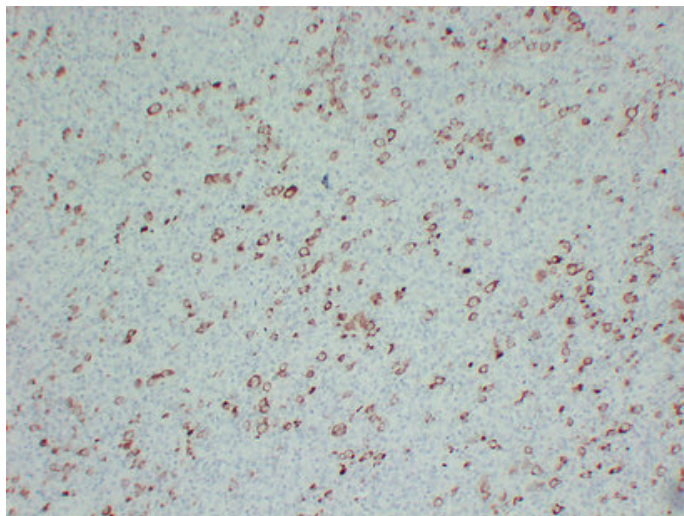




Fascin (7M5) mouse mAb

Catalog_no :	AM6178
Applications :	IHC-p, WB
Reactivity :	Human
Category :	抗原抗体
Size :	50µl/100µl
Gene_name :	FSCN1 FAN1 HSN SNL
Protein_name :	Fascin (55 kDa actin-bundling protein) (Singed-like protein) (p55)
Humanswissprot_no :	Q16658
Immunogen :	Synthesized peptide derived from human Fascin
Specificity :	This antibody detects endogenous levels of human Fascin
Formulation :	Liquid in PBS containing 50% glycerol, 0.5% BSA and 0.02% sodium azide.
Source :	Mouse IgG
Dilution :	IHC-p 1:100-500 , WB 1:500-2000
Purification :	The antibody was affinity-purified from mouse ascites by affinity-chromatography using specific immunogen.
Concentration :	1 mg/ml
Storage_stability :	-20°C/1 year
Notes :	cytoskeleton organization, actin filament organization, cell proliferation, actin filament-based process, actin cytoskeleton organization, actin filament bundle formation,

Product Images



Immunohistochemical analysis of paraffin-embedded Classical Hodgkin's lymphoma. 1, Antibody was diluted at 1:200(4°,overnight). 2, Tris-EDTA,pH8.0 was used for antigen retrieval. 3,Secondary antibody was diluted at 1:200(room temperature, 30min).