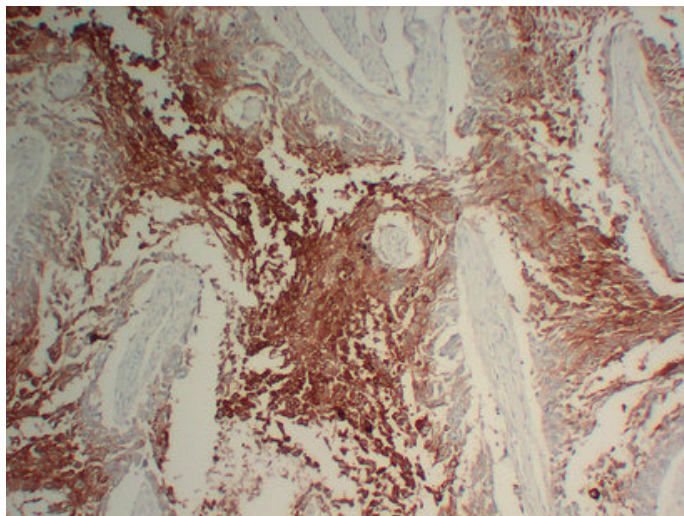




## Epithelial Membrane Antigen(MUC1) (8F1) mouse mAb

Catalog_no :	AM6177
Applications :	IHC-p,WB
Reactivity :	Human
Category :	抗原抗体
Size :	50μl/100μl
Gene_name :	MUC1 PUM
Protein_name :	Mucin-1 (MUC-1) (Breast carcinoma-associated antigen DF3) (Carcinoma-associated mucin) (Episialin) (H23AG) (Krebs von den Lungen-6) (KL-6) (PEMT) (Peanut-reactive urinary mucin) (PUM) (Polymorphic epithelial mucin) (PEM) (Tumor-associated epithelial
Humanswissprot_no :	<a href="#">P15941</a>
Immunogen :	Synthesized peptide derived from human Epithelial Membrane Antigen(MUC1)
Specificity :	This antibody detects endogenous levels of human Epithelial Membrane Antigen(MUC1)
Formulation :	Liquid in PBS containing 50% glycerol, 0.5% BSA and 0.02% sodium azide.
Source :	Mouse/IgG2b, Kappa
Dilution :	IHC-p 1:100-500 , WB 1:500-2000
Purification :	The antibody was affinity-purified from mouse ascites by affinity-chromatography using specific immunogen.
Concentration :	1 mg/ml
Storage_stability :	-20°C/1 year
Notes :	female pregnancy, response to nutrient, response to extracellular stimulus, response to nutrient levels, response to retinoic acid, response to vitamin A, response to vitamin,

## Product Images



Immunohistochemical analysis of paraffin-embedded Esophageal squamous carcinoma. 1, Antibody was diluted at 1:200(4°,overnight). 2, TRIS-EDTA of pH8.0 was used for antigen retrieval. 3,Secondary antibody was diluted at 1:200(room temperature, 30min).