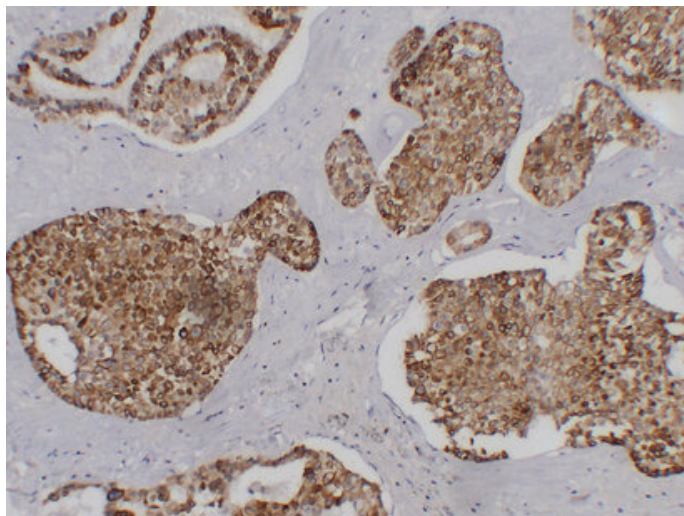




Cytokeratin 7 (2T3) mouse mAb

Catalog_no :	AM6628
Applications :	IHC-p,WB
Reactivity :	Human
Category :	抗原抗体
Size :	50μl/100μl
Gene_name :	KRT7 SCL
Protein_name :	Keratin, type II cytoskeletal 7 (Cytokeratin-7) (CK-7) (Keratin-7) (K7) (Sarcolectin) (Type-II keratin Kb7)
Humanswissprot_no :	P08729
Immunogen :	Synthesized peptide derived from human Cytokeratin 7
Specificity :	This antibody detects endogenous levels of human Cytokeratin 7
Formulation :	Liquid in PBS containing 50% glycerol, 0.5% BSA and 0.02% sodium azide.
Source :	Mouse/IgG1, Kappa
Dilution :	IHC-p 1:100-500 , WB 1:500-2000
Purification :	The antibody was affinity-purified from mouse ascites by affinity-chromatography using specific immunogen.
Concentration :	1 mg/ml
Storage_stability :	-20°C/1 year
Notes :	DNA metabolic process, DNA replication, regulation of translation, cytoskeleton organization, cell cycle,posttranscriptional regulation of gene expression, cell cycle process, cell cycle phase, regulation of cellular protein metabolic process, interp

Product Images



Immunohistochemical analysis of paraffin-embedded Chromophobe cell renal carcinoma. 1, Antibody was diluted at 1:200(4°,overnight). 2, TRIS-EDTA of pH8.0 was used for antigen retrieval. 3,Secondary antibody was diluted at 1:200(room temperature, 30min).