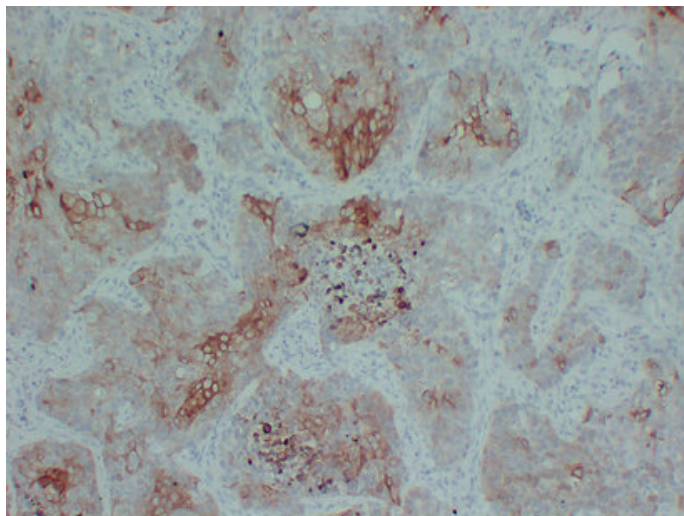




Cytokeratin 5/6 (2W1) mouse mAb

Catalog_no :	AM6040
Applications :	IHC-p
Reactivity :	Human
Category :	抗原抗体
Size :	50μl/100μl
Gene_name :	KRT5/KRT5
Protein_name :	Cytokeratin 5/6 (
Humanswissprot_no :	P13647/P02538
Immunogen :	Synthesized peptide derived from human Cytokeratin 5/6
Specificity :	This antibody detects endogenous levels of human Cytokeratin 5/6
Formulation :	Liquid in PBS containing 50% glycerol, 0.5% BSA and 0.02% sodium azide.
Source :	Mouse/IgG1, Kappa
Dilution :	IHC-p 1:100-500
Purification :	The antibody was affinity-purified from mouse ascites by affinity-chromatography using specific immunogen.
Concentration :	1 mg/ml
Storage_stability :	-20°C/1 year
Notes :	ectoderm development, negative regulation of cell proliferation, epidermis development, epithelial cell differentiation, regulation of cell proliferation, regulation of epithelial cell proliferation, negative regulation of epithelial cell proliferatio

Product Images



Immunohistochemical analysis of paraffin-embedded Lung squamous carcinoma. 1, Antibody was diluted at 1:200(4°,overnight). 2, TRIS-EDTA of pH8.0 was used for antigen retrieval. 3,Secondary antibody was diluted at 1:200(room temperature, 30min).