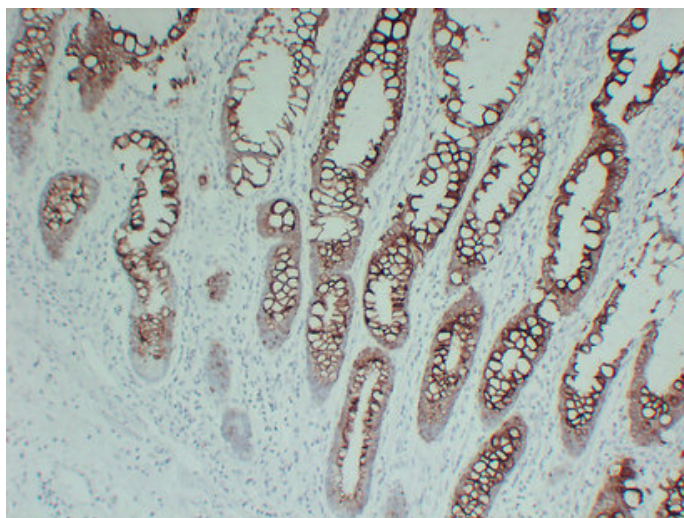




## Cytokeratin 20 (4O2) mouse mAb

Catalog_no :	AM6037
Applications :	IHC-p
Reactivity :	Human
Category :	抗原抗体
Size :	50μl/100μl
Gene_name :	KRT20
Protein_name :	Keratin, type I cytoskeletal 20 (Cytokeratin-20) (CK-20) (Keratin-20) (K20) (Protein IT)
Humanswissprot_no :	<a href="#">P35900</a>
Immunogen :	Synthesized peptide derived from human Cytokeratin 20
Specificity :	This antibody detects endogenous levels of human Cytokeratin 20
Formulation :	Liquid in PBS containing 50% glycerol, 0.5% BSA and 0.02% sodium azide.
Source :	Mouse/IgG2a, Kappa
Dilution :	IHC-p 1:100-500
Purification :	The antibody was affinity-purified from mouse ascites by affinity-chromatography using specific immunogen.
Concentration :	1 mg/ml
Storage_stability :	-20°C/1 year
Notes :	apoptosis, cytoskeleton organization, cell death, programmed cell death, death, regulation of protein localization,cellular response to stress, intermediate filament-based process, intermediate filament cytoskeleton organization,intermediate filament

## Product Images



Immunohistochemical analysis of paraffin-embedded Colon carcinoma. 1, Antibody was diluted at 1:200(4°,overnight). 2, Tris-EDTA,pH8.0 was used for antigen retrieval. 3,Secondary antibody was diluted at 1:200(room temperature, 30min).