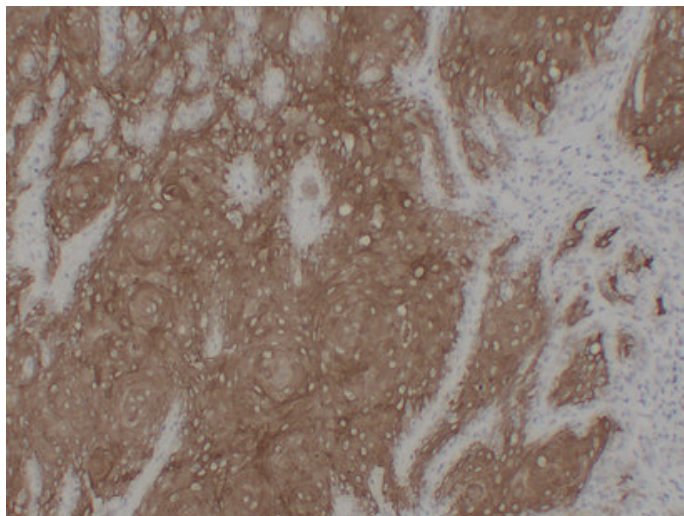




Cytokeratin 16 (3E6) mouse mAb

Catalog_no :	AM6623
Applications :	IHC-p
Reactivity :	Human
Category :	抗原抗体
Size :	50µl/100µl
Gene_name :	KRT16 KRT16A
Protein_name :	Keratin, type I cytoskeletal 16 (Cytokeratin-16) (CK-16) (Keratin-16) (K16)
Humanswissprot_no :	P08779
Immunogen :	Synthesized peptide derived from human Cytokeratin 16
Specificity :	This antibody detects endogenous levels of human Cytokeratin 16
Formulation :	Liquid in PBS containing 50% glycerol, 0.5% BSA and 0.02% sodium azide.
Source :	Mouse IgG
Dilution :	IHC-p 1:100-500
Purification :	The antibody was affinity-purified from mouse ascites by affinity-chromatography using specific immunogen.
Concentration :	1 mg/ml
Storage_stability :	-20°C/1 year
Notes :	cytoskeleton organization, ectoderm development, cell proliferation, epidermis development, intermediate filament-based process, intermediate filament cytoskeleton organization,

Product Images



Immunohistochemical analysis of paraffin-embedded Cutaneous squamous cell carcinoma. 1, Antibody was diluted at 1:200(4°,overnight). 2, Citrate buffer of pH6.0 was used for antigen retrieval. 3,Secondary antibody was diluted at 1:200(room temperature, 30min).