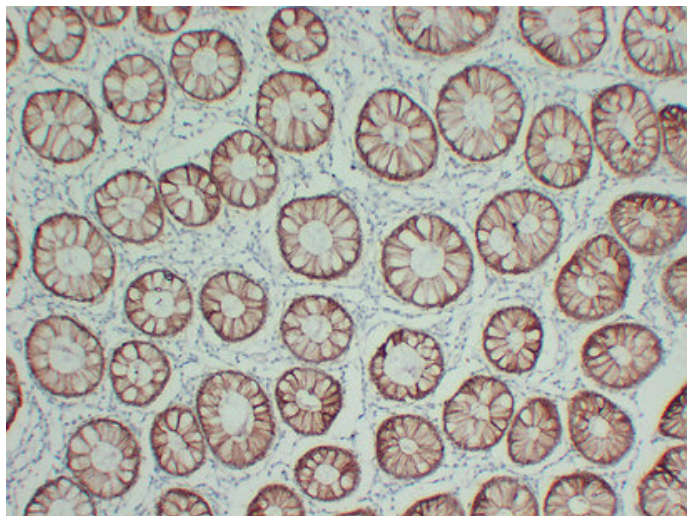




## Claudin 4 (2L9) mouse mAb

Catalog_no :	AM6579
Applications :	IHC-p,WB
Reactivity :	Human
Category :	抗原抗体
Size :	50µl/100µl
Gene_name :	CLDN4 CPER CPETR1 WBSCR8
Protein_name :	Claudin-4 (Clostridium perfringens enterotoxin receptor) (CPE-R) (CPE-receptor) (Williams-Beuren syndrome chromosomal region 8 protein)
Humanswissprot_no :	<a href="#">O14493</a>
Immunogen :	Synthesized peptide derived from human Claudin 4
Specificity :	This antibody detects endogenous levels of human Claudin 4
Formulation :	Liquid in PBS containing 50% glycerol, 0.5% BSA and 0.02% sodium azide.
Source :	Mouse/IgG2b, Kappa
Dilution :	IHC-p 1:100-500 , WB 1:500-2000
Purification :	The antibody was affinity-purified from mouse ascites by affinity-chromatography using specific immunogen.
Concentration :	1 mg/ml
Storage_stability :	-20°C/1 year
Notes :	cell adhesion, pathogenesis, cell-cell adhesion, calcium-independent cell-cell adhesion, biological adhesion,

## Product Images



Immunohistochemical analysis of paraffin-embedded Colon. 1, Antibody was diluted at 1:200(4°,overnight). 2, TRIS-EDTA of pH8.0 was used for antigen retrieval. 3,Secondary antibody was diluted at 1:200(room temperature, 30min).