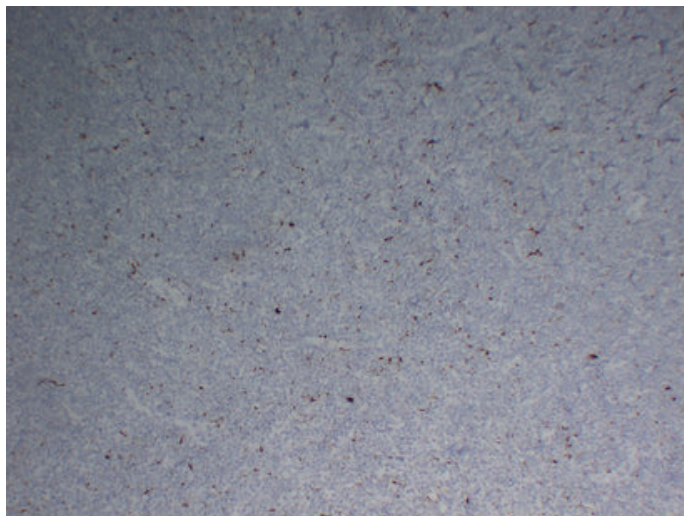




## CD68 (6R10) mouse mAb

|                     |  |
|---------------------|--|
| Catalog_no :        | AM6293   |
| Applications :      | IHC-p  |
| Reactivity :        | Human  |
| Category :          | 抗原抗体   |
| Size :              | 50µl/100µl   |
| Gene_name :         | CD68   |
| Protein_name :      | Macrosialin (Gp110) (CD antigen CD68)  |
| Humanswissprot_no : | <a href="#">P34810</a>   |
| Immunogen :         | Synthesized peptide derived from human CD68  |
| Specificity :       | This antibody detects endogenous levels of human CD68  |
| Formulation :       | Liquid in PBS containing 50% glycerol, 0.5% BSA and 0.02% sodium azide.                                    |
| Source :            | Mouse IgG  |
| Dilution :          | IHC-p 1:100-500  |
| Purification :      | The antibody was affinity-purified from mouse ascites by affinity-chromatography using specific immunogen. |
| Concentration :     | 1 mg/ml  |
| Storage_stability : | -20°C/1 year   |

## Product Images



Immunohistochemical analysis of paraffin-embedded Acute myeloid leukemia. 1, Antibody was diluted at 1:200(4°,overnight). 2, Citrate buffer of pH6.0 was used for antigen retrieval. 3,Secondary antibody was diluted at 1:200(room temperature, 30min).