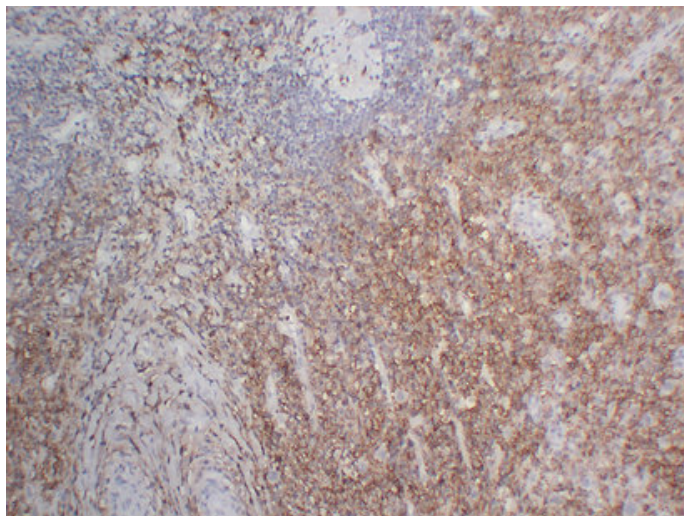




CD38 (2U6) mouse mAb

Catalog_no :	AM6572
Applications :	IHC-p
Reactivity :	Human
Category :	抗原抗体
Size :	50µl/100µl
Gene_name :	CD38
Protein_name :	ADP-ribosyl cyclase 1 (EC 3.2.2.5) (Cyclic ADP-ribose hydrolase 1) (cADPr hydrolase 1) (T10) (CD antigen CD38)
Humanswissprot_no :	P28907
Immunogen :	Synthesized peptide derived from human CD38
Specificity :	This antibody detects endogenous levels of human CD38
Formulation :	Liquid in PBS containing 50% glycerol, 0.5% BSA and 0.02% sodium azide.
Source :	Mouse/IgG1, Kappa
Dilution :	IHC-p 1:100-500
Purification :	The antibody was affinity-purified from mouse ascites by affinity-chromatography using specific immunogen.
Concentration :	1 mg/ml
Storage_stability :	-20°C/1 year
Notes :	regulation of cell growth, response to hypoxia, positive regulation of immune system process, regulation of leukocyte activation, positive regulation of leukocyte activation, regulation of peptide secretion, positive regulation of peptide secretion,

Product Images



Immunohistochemical analysis of paraffin-embedded Hodgkin's Lymphoma. 1, Antibody was diluted at 1:200(4°,overnight). 2, Citrate buffer of pH6.0 was used for antigen retrieval. 3,Secondary antibody was diluted at 1:200(room temperature, 30min).