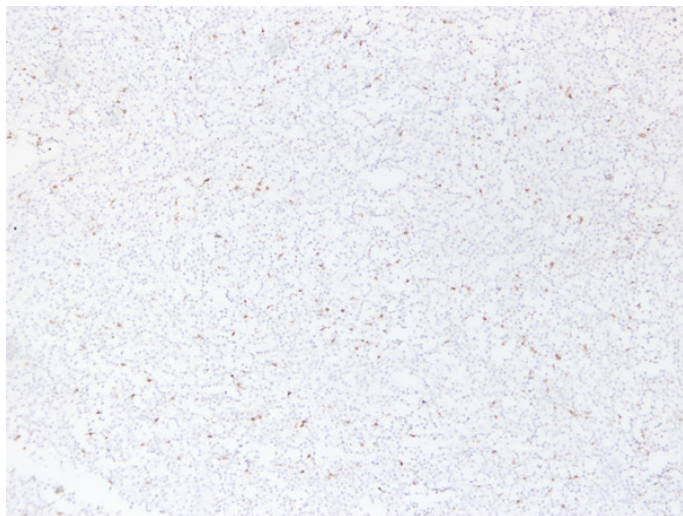




CD3 (5T2) mouse mAb

Catalog_no :	AM6596
Applications :	IHC-p,WB
Reactivity :	Human
Category :	抗原抗体
Size :	50μl/100μl
Gene_name :	CD3E T3E
Protein_name :	T-cell surface glycoprotein CD3 epsilon chain (T-cell surface antigen T3/Leu-4 epsilon chain) (CD antigen CD3e)
Humanswissprot_no :	P07766
Immunogen :	Synthesized peptide derived from human CD3
Specificity :	This antibody detects endogenous levels of human CD3
Formulation :	Liquid in PBS containing 50% glycerol, 0.5% BSA and 0.02% sodium azide.
Source :	Mouse/IgG2b, Kappa
Dilution :	IHC-p 1:100-500 , WB 1:500-2000
Purification :	The antibody was affinity-purified from mouse ascites by affinity-chromatography using specific immunogen.
Concentration :	1 mg/ml
Storage_stability :	-20°C/1 year
Notes :	cell activation, regulation of cytokine production, regulation of protein amino acid phosphorylation, positive regulation of protein amino acid phosphorylation, activation of immune response, immune response-activating cell surface receptor signaling

Product Images



Immunohistochemical analysis of paraffin-embedded Diffuse large B-cell Lymphoma. 1, Antibody was diluted at 1:200(4°,overnight). 2, Citrate buffer of pH6.0 was used for antigen retrieval. 3,Secondary antibody was diluted at 1:200(room temperature, 30min).