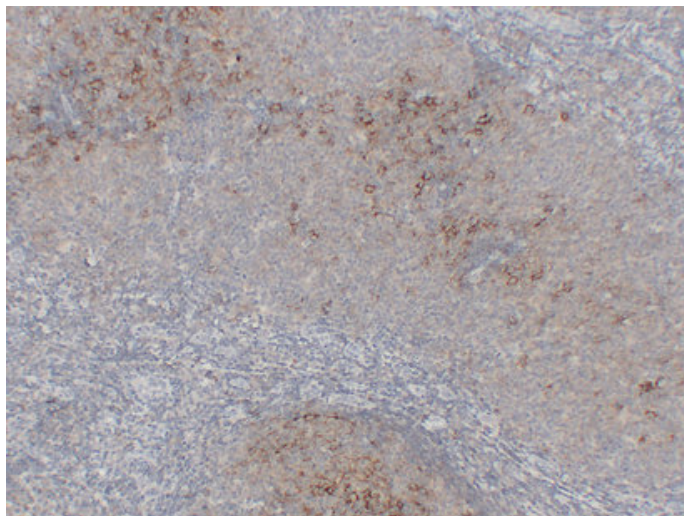




CD23 (7F10) mouse mAb

Catalog_no :	AM6014
Applications :	IHC-p
Reactivity :	Human
Category :	抗原抗体
Size :	50µl/100µl
Gene_name :	FCER2 CD23A CLEC4J FCE2 IGEBF
Protein_name :	Low affinity immunoglobulin epsilon Fc receptor (BLAST-2) (C-type lectin domain family 4 member J) (Fc-epsilon-RII) (Immunoglobulin E-binding factor) (Lymphocyte IgE receptor) (CD antigen CD23) [Cleaved into: Low affinity immunoglobulin epsilon Fc re
Humanswissprot_no :	P06734
Immunogen :	Synthesized peptide derived from human CD23
Specificity :	This antibody detects endogenous levels of human CD23
Formulation :	Liquid in PBS containing 50% glycerol, 0.5% BSA and 0.02% sodium azide.
Source :	Mouse/IgG1, Kappa
Dilution :	IHC-p 1:100-500
Purification :	The antibody was affinity-purified from mouse ascites by affinity-chromatography using specific immunogen.
Concentration :	1 mg/ml
Storage_stability :	-20°C/1 year
Notes :	positive regulation of immune system process, regulation of immune effector process, positive regulation of immune effector process, regulation of leukocyte mediated immunity, positive regulation of leukocyte mediated immunity,regulation of lymphocyt

Product Images



Immunohistochemical analysis of paraffin-embedded Follicular lymphoma. 1, Antibody was diluted at 1:200(4°,overnight). 2, Citric acid ,pH6.0 was used for antigen retrieval. 3,Secondary antibody was diluted at 1:200(room temperature, 30min).