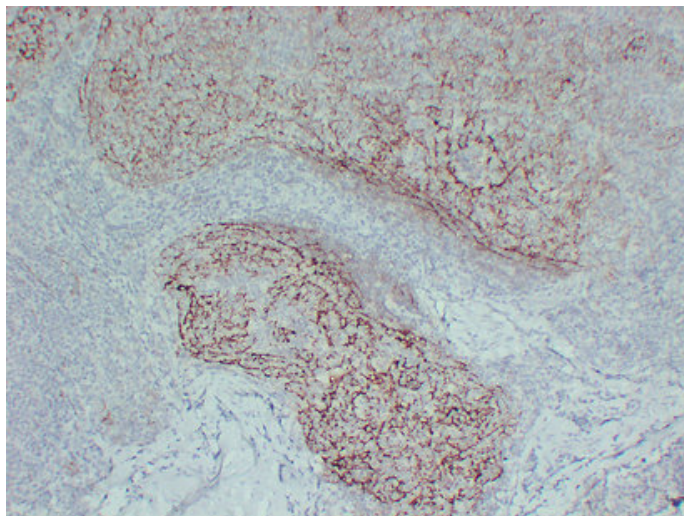


## CD21 (9D1) mouse mAb

Catalog_no :	AM6013
Applications :	IHC-p
Reactivity :	Human
Category :	抗原抗体
Size :	50µl/100µl
Gene_name :	CR2 C3DR
Protein_name :	Complement receptor type 2 (Cr2) (Complement C3d receptor) (Epstein-Barr virus receptor) (EBV receptor) (CD antigen CD21)
Humanswissprot_no :	<a href="#">P20023</a>
Immunogen :	Synthesized peptide derived from human CD21
Specificity :	This antibody detects endogenous levels of human CD21
Formulation :	Liquid in PBS containing 50% glycerol, 0.5% BSA and 0.02% sodium azide.
Source :	Mouse/IgG1, Kappa
Dilution :	IHC-p 1:100-500
Purification :	The antibody was affinity-purified from mouse ascites by affinity-chromatography using specific immunogen.
Concentration :	1 mg/ml
Storage_stability :	-20°C/1 year
Notes :	adaptive immune response, immune effector process, activation of immune response, leukocyte mediated immunity, lymphocyte mediated immunity, humoral immune response mediated by circulating immunoglobulin, adaptive immune response based on somatic reco

## Product Images



Immunohistochemical analysis of paraffin-embedded Follicular Lymphoma. 1, Antibody was diluted at 1:200(4°,overnight). 2, Citric acid ,pH6.0 was used for antigen retrieval. 3,Secondary antibody was diluted at 1:200(room temperature, 30min).