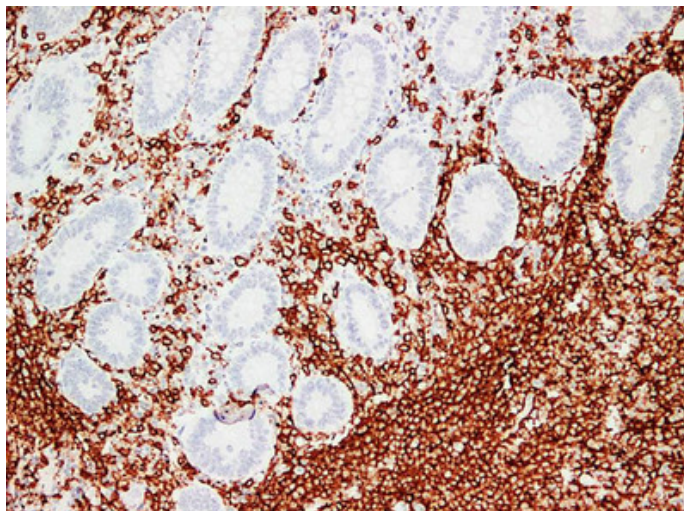




CD20 (2R7) mouse mAb

| | |
|---------------------|--|
| Catalog_no : | AM6149 |
| Applications : | IHC-p |
| Reactivity : | Human |
| Category : | 抗原抗体 |
| Size : | 50µl/100µl |
| Gene_name : | MS4A1 CD20 |
| Protein_name : | B-lymphocyte antigen CD20 (B-lymphocyte surface antigen B1) (Bp35) (Leukocyte surface antigen Leu-16) (Membrane-spanning 4-domains subfamily A member 1) (CD antigen CD20) |
| Humanswissprot_no : | P11836 |
| Immunogen : | Synthesized peptide derived from human CD20 |
| Specificity : | This antibody detects endogenous levels of human CD20 |
| Formulation : | Liquid in PBS containing 50% glycerol, 0.5% BSA and 0.02% sodium azide. |
| Source : | Mouse/IgG1, Kappa |
| Dilution : | IHC-p 1:100-500 |
| Purification : | The antibody was affinity-purified from mouse ascites by affinity-chromatography using specific immunogen. |
| Concentration : | 1 mg/ml |
| Storage_stability : | -20°C/1 year |
| Notes : | cell activation, immune response, B cell activation, leukocyte activation, lymphocyte activation, |

Product Images



Immunohistochemical analysis of paraffin-embedded Tonsil. 1, Antibody was diluted at 1:200(4°,overnight). 2, Citrate buffer of pH6.0 was used for antigen retrieval. 3,Secondary antibody was diluted at 1:200(room temperature, 30min).