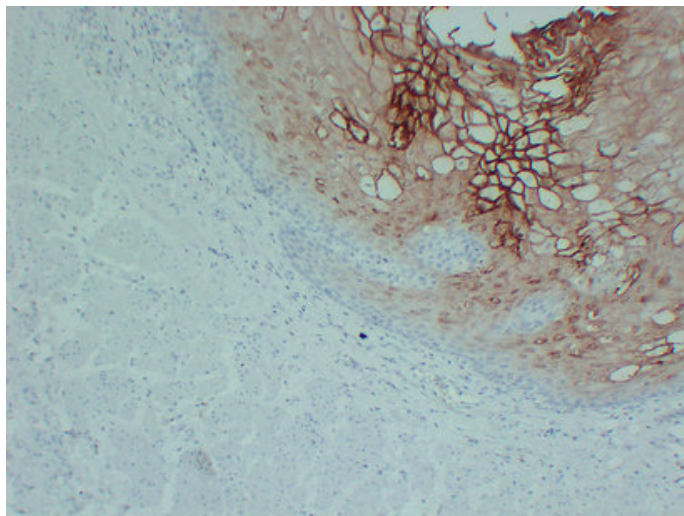


## Annexin A1 (9A9) mouse mAb

Catalog_no :	AM6004
Applications :	IHC-p
Reactivity :	Human
Category :	抗原抗体
Size :	50µl/100µl
Gene_name :	ANXA1 ANX1 LPC1
Protein_name :	Annexin A1 (Annexin I) (Annexin-1) (Calpactin II) (Calpactin-2) (Chromobindin-9) (Lipocortin I) (Phospholipase A2 inhibitory protein) (p35)
Humanswissprot_no :	<a href="#">P04083</a>
Immunogen :	Synthesized peptide derived from human Annexin A1
Specificity :	This antibody detects endogenous levels of human Annexin A1
Formulation :	Liquid in PBS containing 50% glycerol, 0.5% BSA and 0.02% sodium azide.
Source :	Mouse/IgG1, Kappa
Dilution :	IHC-p 1:100-500
Purification :	The antibody was affinity-purified from mouse ascites by affinity-chromatography using specific immunogen.
Concentration :	1 mg/ml
Storage_stability :	-20°C/1 year
Notes :	lipid transport, anti-apoptosis, cell motion, defense response, inflammatory response, cell cycle, cell surface receptor linked signal transduction, ectoderm development, epidermis development, response to wounding, epidermal cell differentiation, li

## Product Images



Immunohistochemical analysis of paraffin-embedded Esophagus. 1, Antibody was diluted at 1:200(4°,overnight). 2, Tris-EDTA,pH8.0 was used for antigen retrieval. 3,Secondary antibody was diluted at 1:200(room temperature, 30min).