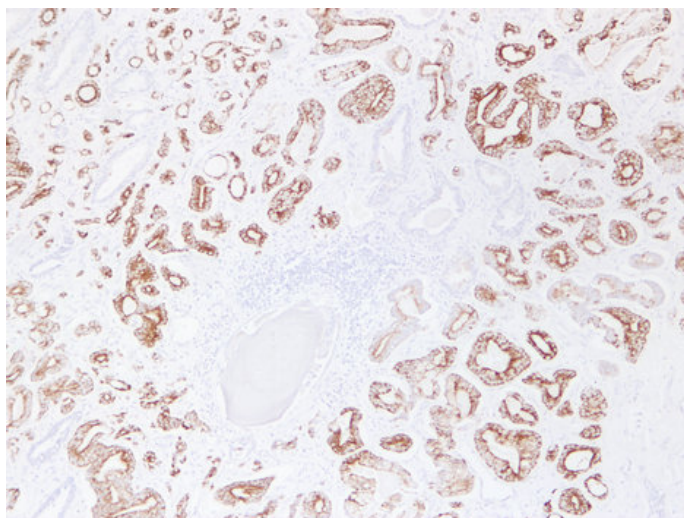




## AMACR (9Y10) mouse mAb

Catalog_no :	AM6606
Applications :	IHC-p, WB
Reactivity :	Human
Category :	抗原抗体
Size :	50μl/100μl
Gene_name :	AMACR
Protein_name :	Alpha-methylacyl-CoA racemase (EC 5.1.99.4) (2-methylacyl-CoA racemase)
Humanswissprot_no :	<a href="#">Q9UHK6</a>
Immunogen :	Synthesized peptide derived from human AMACR
Specificity :	This antibody detects endogenous levels of human AMACR
Formulation :	Liquid in PBS containing 50% glycerol, 0.5% BSA and 0.02% sodium azide.
Source :	Mouse/IgG1, Kappa
Dilution :	IHC-p 1:100-500 , WB 1:500-2000
Purification :	The antibody was affinity-purified from mouse ascites by affinity-chromatography using specific immunogen.
Concentration :	1 mg/ml
Storage_stability :	-20°C/1 year
Notes :	steroid biosynthetic process, bile acid biosynthetic process, ion transport, phosphate transport, anion transport, steroid metabolic process, bile acid metabolic process, lipid biosynthetic process, inorganic anion transport, organic acid biosynthetic

## Product Images



Immunohistochemical analysis of paraffin-embedded Prostatic carcinoma. 1, Antibody was diluted at 1:200(4°,overnight). 2, TRIS-EDTA of pH8.0 was used for antigen retrieval. 3,Secondary antibody was diluted at 1:200(room temperature, 30min).