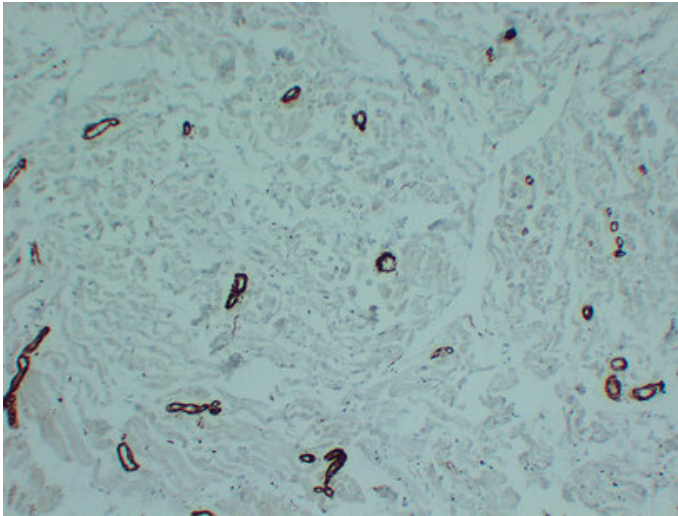




Actin, smooth muscle (SMA) (1F6) mouse mAb

Catalog_no :	AM6566
Applications :	IHC-p
Reactivity :	Human
Category :	抗原抗体
Size :	50μl/100μl
Gene_name :	Actin, smooth muscle
Protein_name :	Actin, smooth muscle
Humanswissprot_no :	P62736/P63267
Immunogen :	Synthesized peptide derived from human Actin, smooth muscle (SMA)
Specificity :	This antibody detects endogenous levels of human Actin, smooth muscle (SMA)
Formulation :	Liquid in PBS containing 50% glycerol, 0.5% BSA and 0.02% sodium azide.
Source :	Mouse/IgG2a, Kappa
Dilution :	IHC-p 1:100-500
Purification :	The antibody was affinity-purified from mouse ascites by affinity-chromatography using specific immunogen.
Concentration :	1 mg/ml
Storage_stability :	-20°C/1 year
Notes :	muscle system process, circulatory system process, vascular process in circulatory system, muscle contraction, smooth muscle contraction, blood circulation, regulation of blood pressure, vascular smooth muscle contraction, regulation of tube size, va

Product Images



Immunohistochemical analysis of paraffin-embedded Cardiac muscle. 1, Antibody was diluted at 1:200(4°,overnight). 2, TRIS-EDTA of pH8.0 was used for antigen retrieval. 3,Secondary antibody was diluted at 1:200(room temperature, 30min).