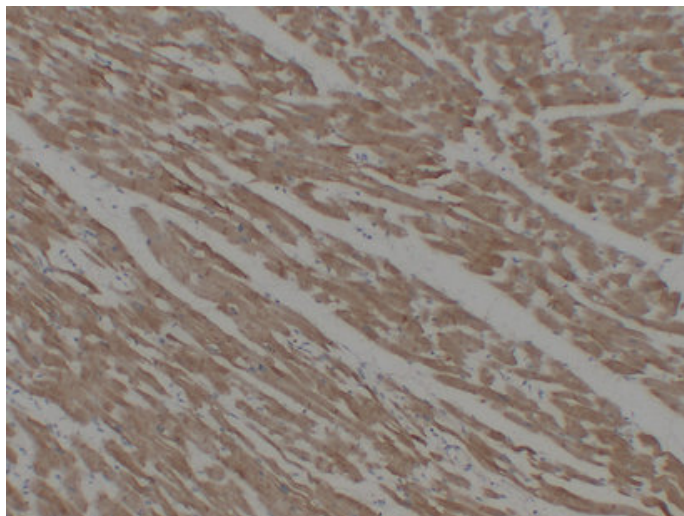




## Actin, Muscle Specific (3L10) mouse mAb

|                     |   |
|---------------------|---|
| Catalog_no :        | AM6142  |
| Applications :      | IHC-p   |
| Reactivity :        | Human   |
| Category :          | 抗原抗体  |
| Size :              | 50μl/100μl  |
| Gene_name :         | Actin, Muscle Specific  |
| Protein_name :      | Actin, Muscle Specific  |
| Humanswissprot_no : | <a href="#">P68032/P68133/P63267</a>  |
| Immunogen :         | Synthesized peptide derived from human Actin, Muscle Specific   |
| Specificity :       | This antibody detects endogenous levels of human Actin, Muscle Specific   |
| Formulation :       | Liquid in PBS containing 50% glycerol, 0.5% BSA and 0.02% sodium azide.   |
| Source :            | Mouse IgG   |
| Dilution :          | IHC-p 1:100-500   |
| Purification :      | The antibody was affinity-purified from mouse ascites by affinity-chromatography using specific immunogen.  |
| Concentration :     | 1 mg/ml   |
| Storage_stability : | -20°C/1 year  |
| Notes :             | heart morphogenesis, muscle system process, circulatory system process, heart process, vascular process in circulatory system, apoptosis, muscle contraction, smooth muscle contraction, striated muscle contraction, cytoskeleton organization, actin fila |

## Product Images



Immunohistochemical analysis of paraffin-embedded Cardiac muscle. 1, Antibody was diluted at 1:200(4°,overnight). 2, Citric acid ,pH6.0 was used for antigen retrieval. 3,Secondary antibody was diluted at 1:200(room temperature, 30min).