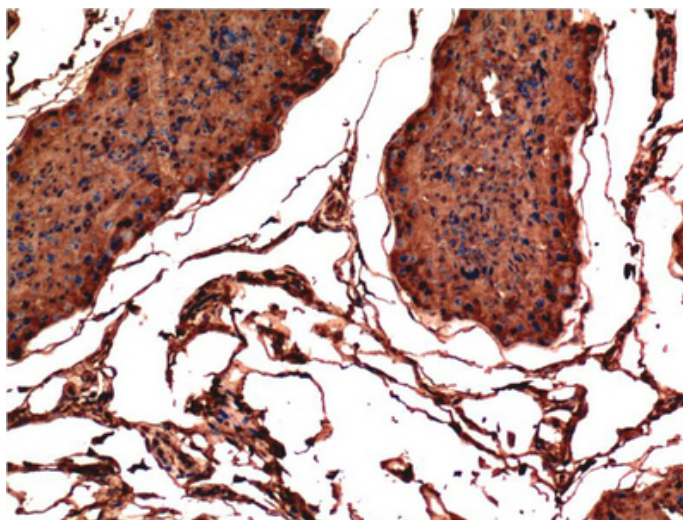




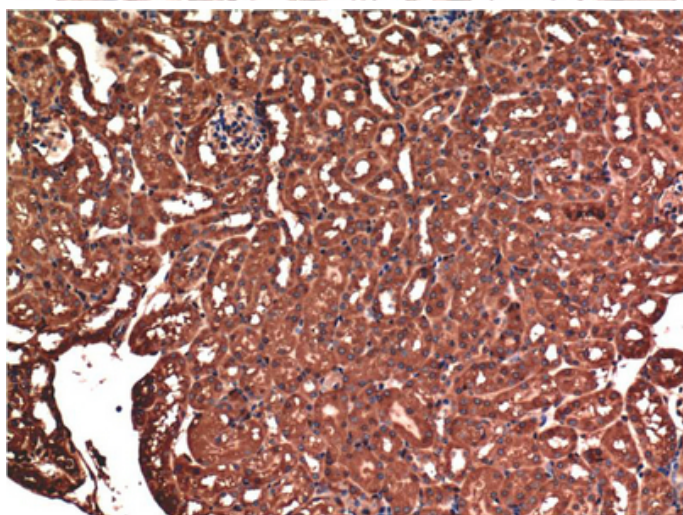
Bax mouse Monoclonal Antibody(1C1)

| | |
|---------------------|--|
| Catalog_no : | AM3623 |
| Applications : | WB,IHC-p |
| Reactivity : | Human,Rat,Mouse |
| Category : | 抗原抗体 |
| Size : | 100µg/50µg |
| Gene_name : | BAX |
| Protein_name : | BAX |
| Humangene_id : | 581 |
| Humanswissprot_no : | Q07812 |
| Immunogen : | Synthetic Peptide of Bax at AA range of 30-110 |
| Specificity : | Bax protein detects endogenous levels of BAX |
| Formulation : | Liquid in PBS containing 50% glycerol, 0.5% BSA and 0.02% sodium azide. |
| Source : | Mouse |
| Dilution : | WB 1:1000-2000, IHC 1:100-200 |
| Purification : | The antibody was affinity-purified from mouse ascites by affinity-chromatography using specific immunogen. |
| Concentration : | 1 mg/ml |
| Storage_stability : | -20°C/1 year |
| Msds : | MSDS_Antibody.pdf |
| Other_name : | BAX |
| Molecular Weight : | 20KD |

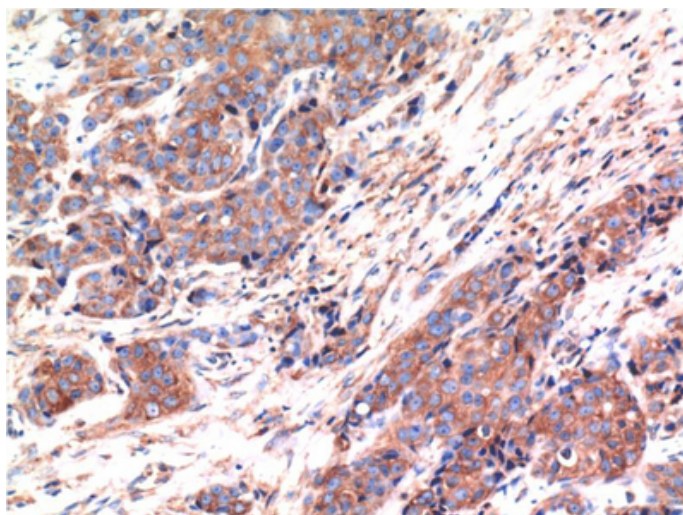
Product Images



Immunohistochemical analysis of paraffin-embedded Rat Testis Tissue using Bax Mouse mAb diluted at 1:200.

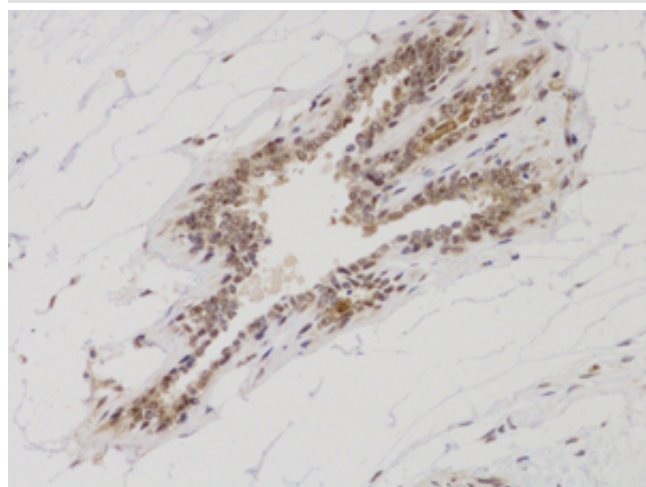
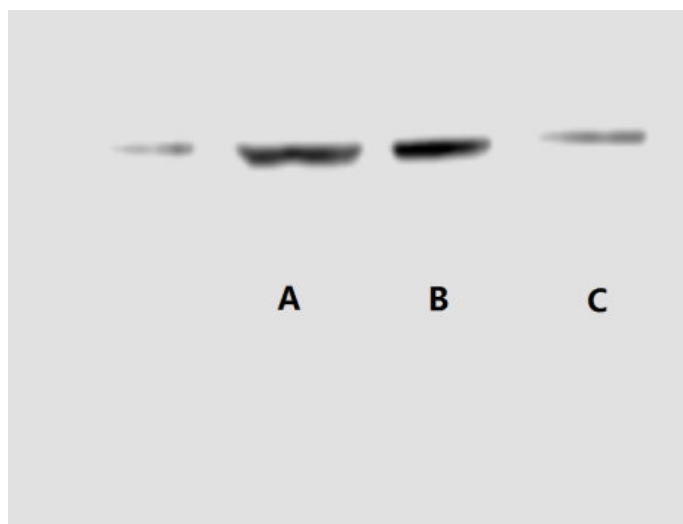


Immunohistochemical analysis of paraffin-embedded Mouse Kidney Tissue using Bax Mouse mAb diluted at 1:200.



Immunohistochemical analysis of paraffin-embedded Human Breast Carcinoma Tissue using Bax Mouse mAb diluted at 1:200.

Western blot detection of Bax in human breast cancer cell line MCF-7(A), MDA-MB-231(B) and Cal51 (C) using Bax mouse mAb (1:1000 diluted). Predicted band size: 20kDa. Observed band size: 20kDa. Picture was kindly provided by our customer from Tianjin Medical University Cancer Institute and Hospital



Immunohistochemical analysis of paraffin-embedded Human breast cancer. 1, Using Bax Mouse mAb diluted at 1:200 (4°, overnight). 2, High-pressure and temperature Citric acid, pH6.0 was used for antigen retrieval. 3, Secondary antibody was diluted at 1:200 (room temperature, 50min). Picture was kindly provided by our customer from Tianjin Medical University Cancer Institute and Hospital