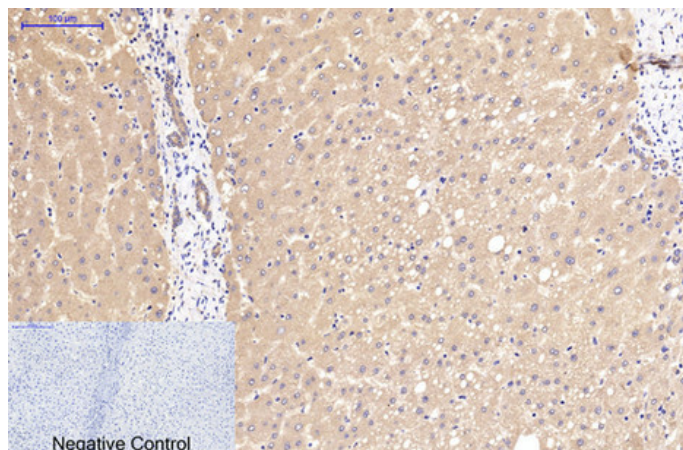




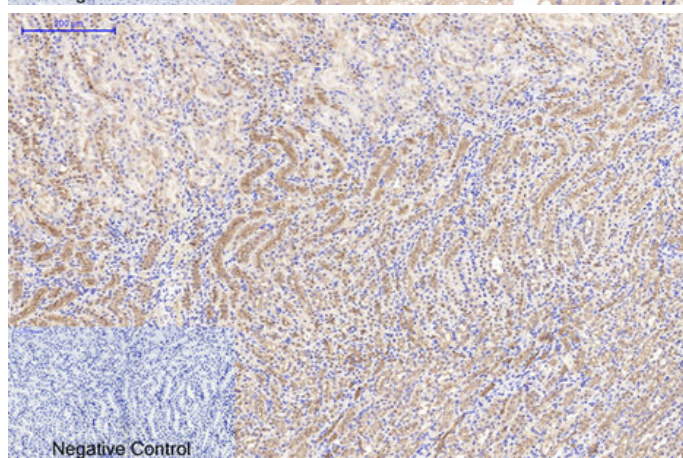
Catenin- β Monoclonal Antibody(4F2)

Catalog_no :	AM3403
Applications :	WB,IF,IHC-p
Reactivity :	Human,Mouse,Rat
Category :	抗原抗体
Size :	100 μ g/50 μ g
Gene_name :	CTNNB1
Protein_name :	Catenin beta-1
Humangene_id :	1499
Humanswissprot_no :	P35222
Immunogen :	Recombinant Protein of Catenin- β
Specificity :	The antibody detects endogenous Catenin- β protein.
Formulation :	PBS, pH 7.4, containing 0.02% sodium azide as Preservative and 50% Glycerol.
Source :	Mouse
Dilution :	WB: 1:1000-2000 IHC: 1:200-500 IF 1:200
Purification :	The antibody was affinity-purified from mouse ascites by affinity-chromatography using epitope-specific immunogen.
Storage_stability :	-20°C/1 year
Msds :	MSDS_Antibody.pdf
Other_name :	CTNNB1; CTNNB; OK/SW-cl.35; Catenin beta-1; Beta-catenin
Molecular Weight :	92KD

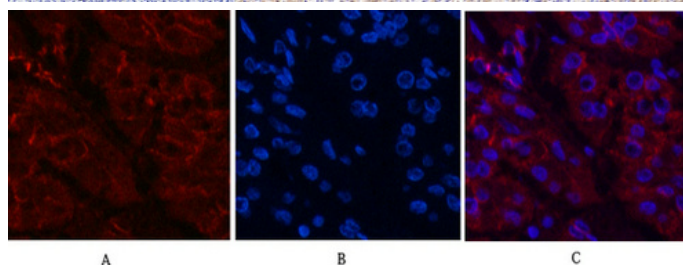
Product Images



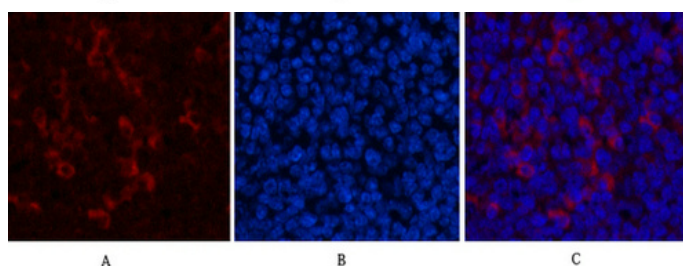
Immunohistochemical analysis of paraffin-embedded Human-liver tissue. 1, Catenin- β Monoclonal Antibody(4F2) was diluted at 1:200(4°C, overnight). 2, Sodium citrate pH 6.0 was used for antibody retrieval(>98°C, 20min). 3, Secondary antibody was diluted at 1:200(room temperature, 30min). Negative control was used by secondary antibody only.



Immunohistochemical analysis of paraffin-embedded Mouse-kidney tissue. 1, Catenin- β Monoclonal Antibody(4F2) was diluted at 1:200(4°C, overnight). 2, Sodium citrate pH 6.0 was used for antibody retrieval(>98°C, 20min). 3, Secondary antibody was diluted at 1:200(room temperature, 30min). Negative control was used by secondary antibody only.

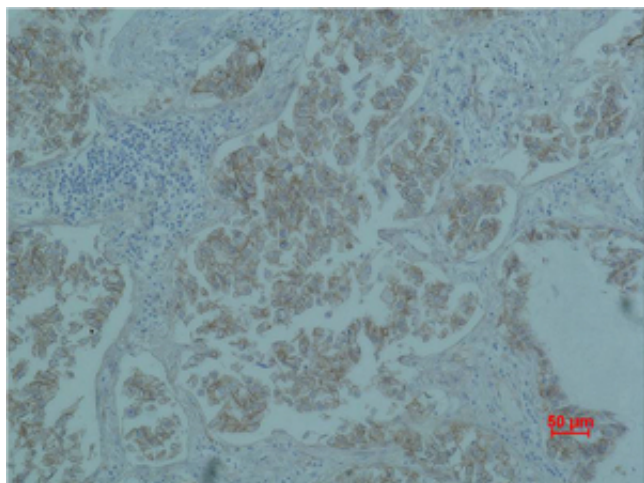
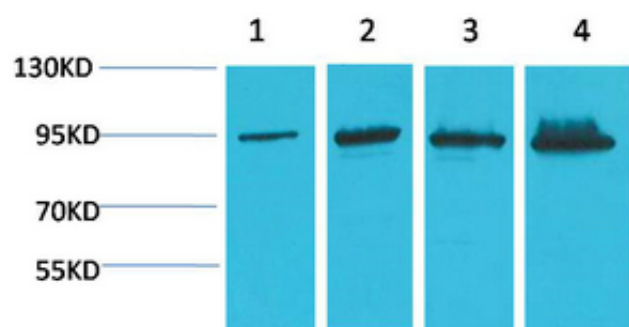


Immunofluorescence analysis of Human-stomach-cancer tissue. 1, Catenin- β Monoclonal Antibody(4F2)(red) was diluted at 1:200(4°C, overnight). 2, Cy3 labeled Secondary antibody was diluted at 1:300(room temperature, 50min). 3, Picture B: DAPI(blue) 10min. Picture A: Target. Picture B: DAPI. Picture C: merge of A+B



Immunofluorescence analysis of Mouse-spleen tissue. 1, Catenin- β Monoclonal Antibody(4F2)(red) was diluted at 1:200(4°C, overnight). 2, Cy3 labeled Secondary antibody was diluted at 1:300(room temperature, 50min). 3, Picture B: DAPI(blue) 10min. Picture A: Target. Picture B: DAPI. Picture C: merge of A+B

Western blot analysis of 1) Hela, 2) 293T, 3) Mouse Liver Tissue, 4) Rat Liver Tissue using Catenin- β Monoclonal Antibody.



Immunohistochemical analysis of paraffin-embedded Human Lung carcinoma using Catenin-β Monoclonal Antibody.