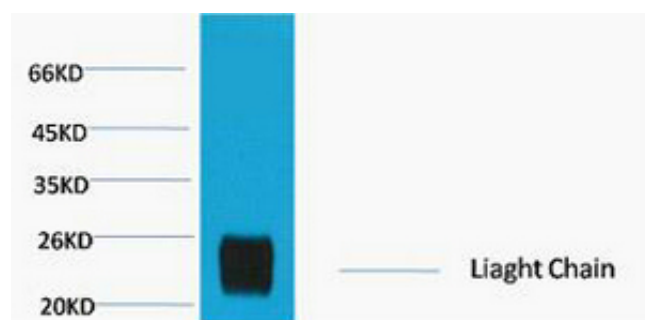




Rabbit IgG (Light Chain Specific) Monoclonal Antibody(8D6)

Catalog_no :	AM3168
Applications :	WB
Reactivity :	Rabbit
Category :	抗原抗体
Size :	100µg/50µg
Immunogen :	Recombinant Protein of Rabbit IgG (Light Chain Specific)
Specificity :	The antibody reacts with the light chains on rabbit IgG and with those common to other rabbit immunoglobulins. The antibody does not react with the heavy chain of rabbit IgG. The antibody minimal cross-reaction with bovine, goat, Armenian hamster, ho
Formulation :	PBS, pH 7.4, containing 0.02% sodium azide as Preservative and 50% Glycerol.
Source :	Mouse
Dilution :	WB: 1:2000-5000
Purification :	The antibody was affinity-purified from mouse ascites by affinity-chromatography using specific immunogen.
Storage_stability :	-20°C/1 year
Msds :	MSDS_Antibody.pdf
Molecular Weight :	25KD

Product Images



Western blot analysis of Reduced Rabbit IgG, H+L, diluted at 1:10000.