



Peroxiredoxin 1 Monoclonal Antibody(8E7)

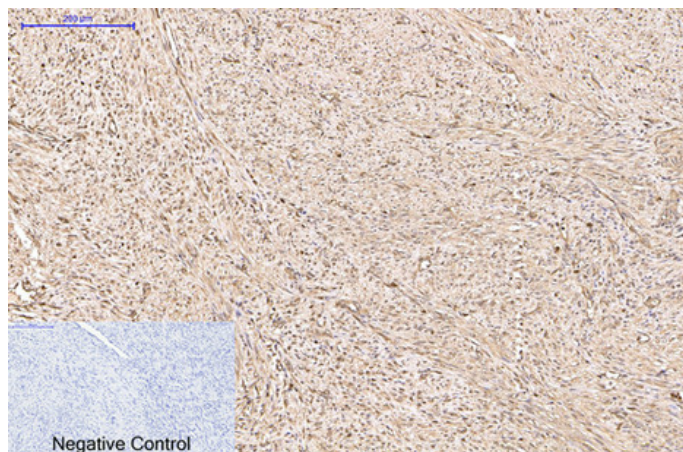
Catalog_no :	AM3112
Applications :	WB,IHC-p,IF
Reactivity :	Human,Mouse,Rat
Category :	抗原抗体
Size :	100µg/50µg
Gene_name :	PRDX1
Protein_name :	Peroxiredoxin-1
Humangene_id :	5052
Humanswissprot_no :	Q06830
Mousegene_id :	18477
Mouseswissprot_no :	P35700
Ratgene_id :	117254
Ratswissprot_no :	Q63716
Immunogen :	Recombinant Protein of Peroxiredoxin-1
Specificity :	The antibody detects endogenous Peroxiredoxin 1 protein.
Formulation :	PBS, pH 7.4, containing 0.02% sodium azide as Preservative and 50% Glycerol.
Source :	Mouse
Dilution :	WB: 1:1000-3000 IF: 1:100-200 IHC 1:50-300
Purification :	The antibody was affinity-purified from mouse ascites by affinity-chromatography using specific immunogen.
Storage_stability :	-20°C/1 year
Msds :	MSDS_Antibody.pdf
Other_name :	PRDX1; PAGA; PAGB; TDPX2; Peroxiredoxin-1; Natural killer cell-enhancing factor A; NKEF-A; Proliferation-associated gene protein; PAG; Thioredoxin peroxidase 2; Thioredoxin-dependent peroxide reductase 2



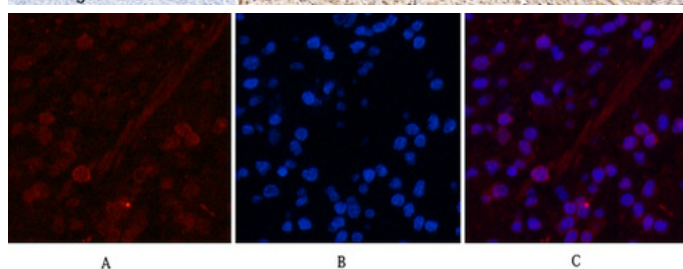
Molecular
Weight :

21KD

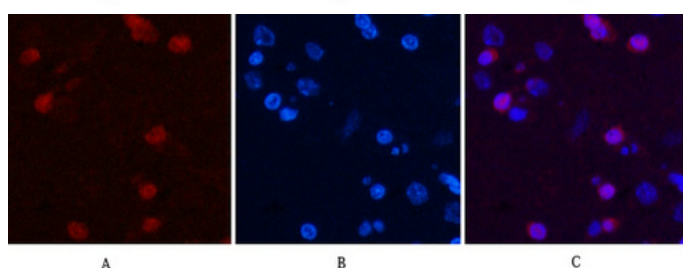
Product Images



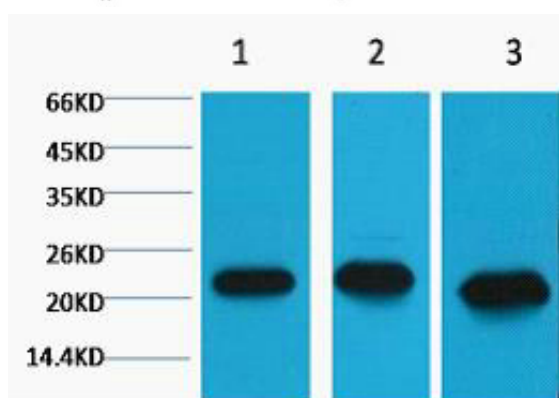
Immunohistochemical analysis of paraffin-embedded Human-uterus-cancer tissue. 1, Peroxiredoxin 1 Monoclonal Antibody(8E7) was diluted at 1:200(4°C, overnight). 2, Sodium citrate pH 6.0 was used for antibody retrieval(>98°C, 20min). 3, Secondary antibody was diluted at 1:200(room temperature, 30min). Negative control was used by secondary antibody only.



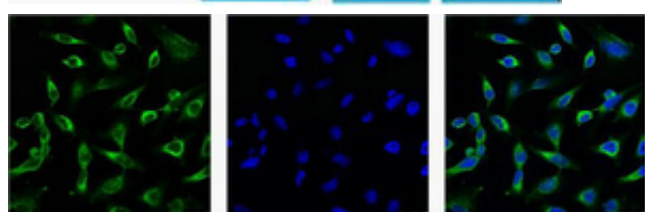
Immunofluorescence analysis of Human-appendix tissue. 1, Peroxiredoxin 1 Monoclonal Antibody(8E7)(red) was diluted at 1:200(4°C, overnight). 2, Cy3 labeled Secondary antibody was diluted at 1:300(room temperature, 50min). 3, Picture B: DAPI(blue) 10min. Picture A: Target. Picture B: DAPI. Picture C: merge of A+B



Immunofluorescence analysis of Rat-brain tissue. 1, Peroxiredoxin 1 Monoclonal Antibody(8E7)(red) was diluted at 1:200(4°C, overnight). 2, Cy3 labeled Secondary antibody was diluted at 1:300(room temperature, 50min). 3, Picture B: DAPI(blue) 10min. Picture A: Target. Picture B: DAPI. Picture C: merge of A+B



Western blot analysis of 1) MCF7, 2) Rat Kidney Tissue, 3) Mouse Brain Tissue, diluted at 1:2000.



IF analysis of Hela with antibody (Left) and DAPI (Right) diluted at 1:100.