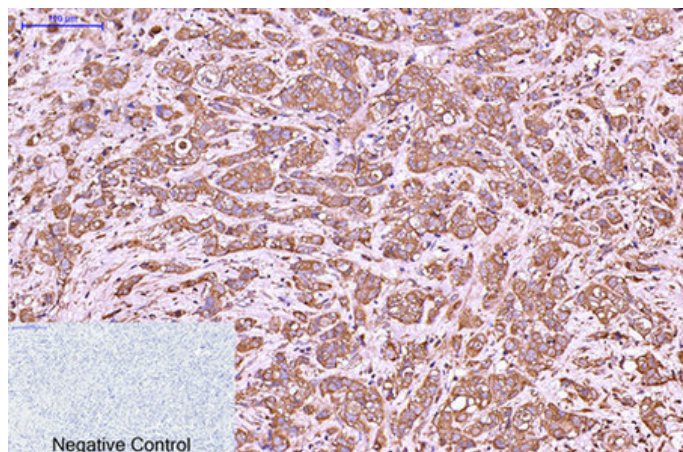




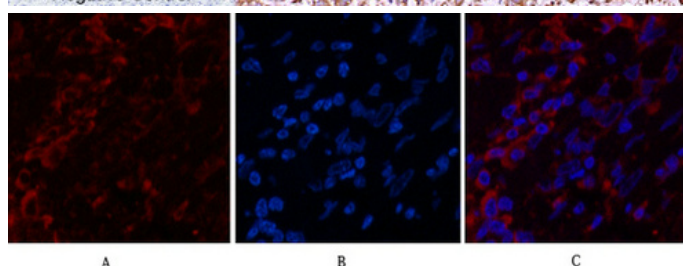
Cytokeratin 6 Monoclonal Antibody(4A1)

Catalog_no :	AM3080
Applications :	WB,IHC-p,IF,
Reactivity :	Human
Category :	抗原抗体
Size :	100µg/50µg
Gene_name :	KRT6A/B/C
Protein_name :	Keratin type II cytoskeletal 6A/B/C
Humangene_id :	3854/286887/3853
Humanswissprot_no :	P02538/P04259/P48668
Immunogen :	Synthetic Peptide of Cytokeratin 6
Specificity :	The antibody detects endogenous Cytokeratin 6 proteins.
Formulation :	PBS, pH 7.4, containing 0.02% sodium azide as Preservative and 50% Glycerol.
Source :	Mouse
Dilution :	WB: 1:1000 IF 1:200 IHC 1:50-300
Purification :	The antibody was affinity-purified from mouse ascites by affinity-chromatography using specific immunogen.
Storage_stability :	-20°C/1 year
Msds :	MSDS_Antibody.pdf
Molecular Weight :	56-60KD

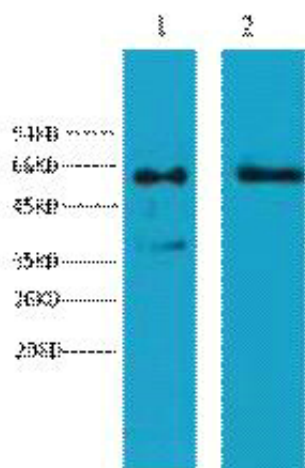
Product Images



Immunohistochemical analysis of paraffin-embedded Human-breast-cancer tissue. 1, Cytokeratin 6 Monoclonal Antibody(4A1) was diluted at 1:200(4°C, overnight). 2, Sodium citrate pH 6.0 was used for antibody retrieval(>98°C, 20min). 3, Secondary antibody was diluted at 1:200(room temperature, 30min). Negative control was used by secondary antibody only.



Immunofluorescence analysis of Human-breast-cancer tissue. 1, Cytokeratin 6 Monoclonal Antibody(4A1)(red) was diluted at 1:200(4°C, overnight). 2, Cy3 labeled Secondary antibody was diluted at 1:300(room temperature, 50min). 3, Picture B: DAPI(blue) 10min. Picture A: Target. Picture B: DAPI. Picture C: merge of A+B



Western blot analysis of 1) HeLa, 2) HepG2, diluted at 1:2000.