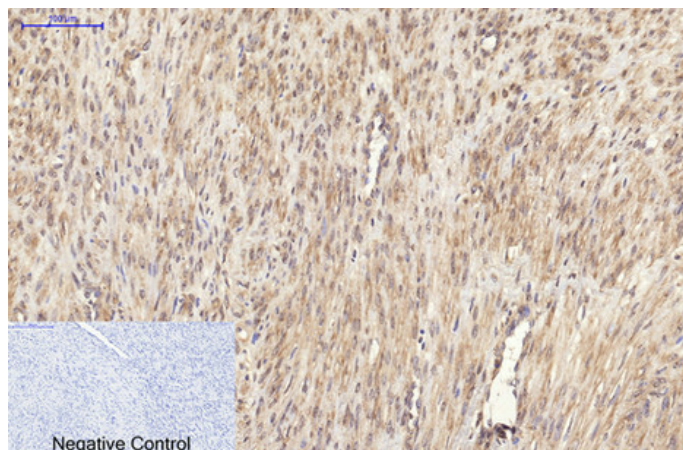




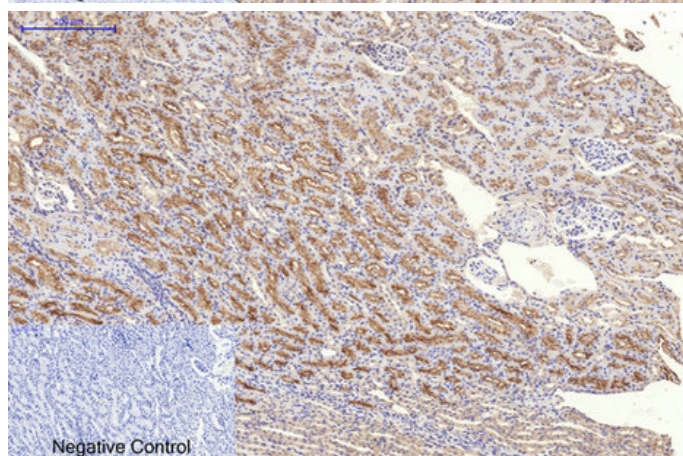
Ki 67 Monoclonal Antibody(4A8)

Catalog_no :	AM3064
Applications :	IHC-P,IF
Reactivity :	Human,Mouse,Rat
Category :	抗原抗体
Size :	100µg/50µg
Gene_name :	MKI67
Protein_name :	Antigen KI-67
Humangene_id :	4288
Humanswissprot_no :	P46013
Immunogen :	Synthetic Peptide of Ki 67
Specificity :	The antibody detects endogenous Ki 67 proteins.
Formulation :	PBS, pH 7.4, containing 0.02% sodium azide as Preservative and 50% Glycerol.
Source :	Mouse
Dilution :	IHC 1:200 IF 1:50-200
Purification :	The antibody was affinity-purified from mouse ascites by affinity-chromatography using specific immunogen.
Storage_stability :	-20°C/1 year
Msds :	MSDS_Antibody.pdf
Other_name :	MKI67; Antigen KI-67

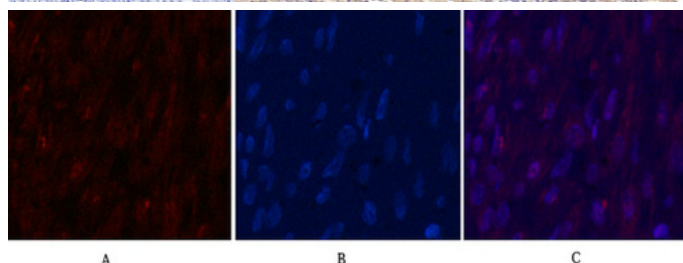
Product Images



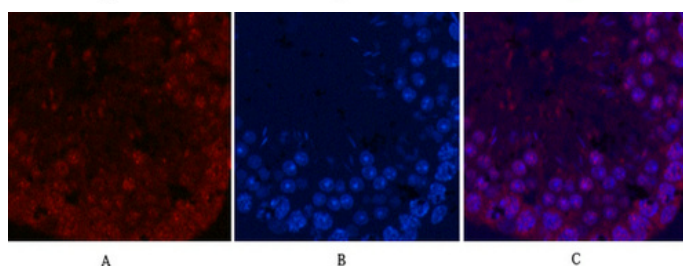
Immunohistochemical analysis of paraffin-embedded Human-uterus-cancer tissue. 1, Ki 67 Monoclonal Antibody(4A8) was diluted at 1:200(4°C, overnight). 2, Sodium citrate pH 6.0 was used for antibody retrieval(>98°C, 20min). 3, Secondary antibody was diluted at 1:200(room temperature, 30min). Negative control was used by secondary antibody only.



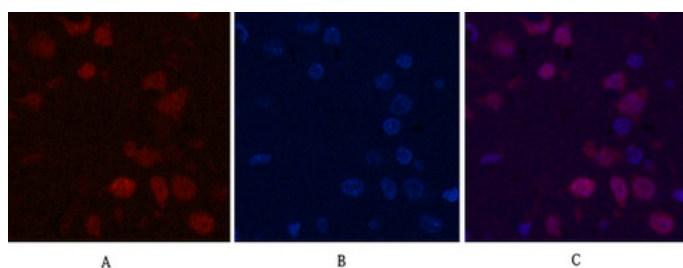
Immunohistochemical analysis of paraffin-embedded Rat-kidney tissue. 1, Ki 67 Monoclonal Antibody(4A8) was diluted at 1:200(4°C, overnight). 2, Sodium citrate pH 6.0 was used for antibody retrieval(>98°C, 20min). 3, Secondary antibody was diluted at 1:200(room temperature, 30min). Negative control was used by secondary antibody only.



Immunofluorescence analysis of Human-breast-cancer tissue. 1, Ki 67 Monoclonal Antibody(4A8)(red) was diluted at 1:200(4°C, overnight). 2, Cy3 labeled Secondary antibody was diluted at 1:300(room temperature, 50min). 3, Picture B: DAPI(blue) 10min. Picture A: Target. Picture B: DAPI. Picture C: merge of A+B



Immunofluorescence analysis of Mouse-testis tissue. 1, Ki 67 Monoclonal Antibody(4A8)(red) was diluted at 1:200(4°C, overnight). 2, Cy3 labeled Secondary antibody was diluted at 1:300(room temperature, 50min). 3, Picture B: DAPI(blue) 10min. Picture A: Target. Picture B: DAPI. Picture C: merge of A+B



Immunofluorescence analysis of Rat-brain tissue. 1, Ki 67 Monoclonal Antibody(4A8)(red) was diluted at 1:200(4°C, overnight). 2, Cy3 labeled Secondary antibody was diluted at 1:300(room temperature, 50min). 3, Picture B: DAPI(blue) 10min. Picture A: Target. Picture B: DAPI. Picture C: merge of A+B

IHC staining of Mouse Kidney tissue, diluted at 1:200.

