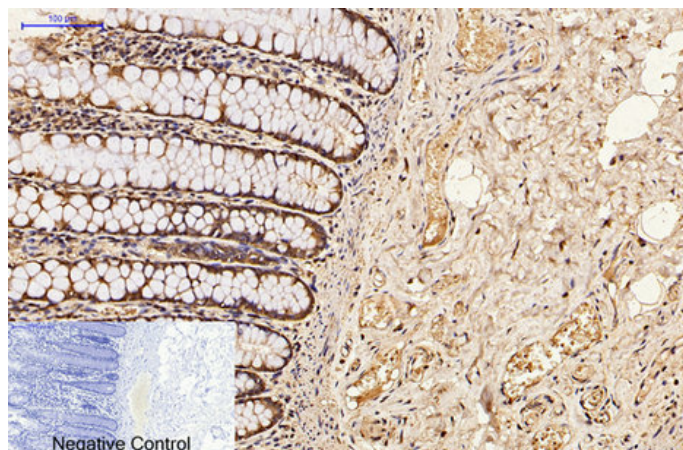




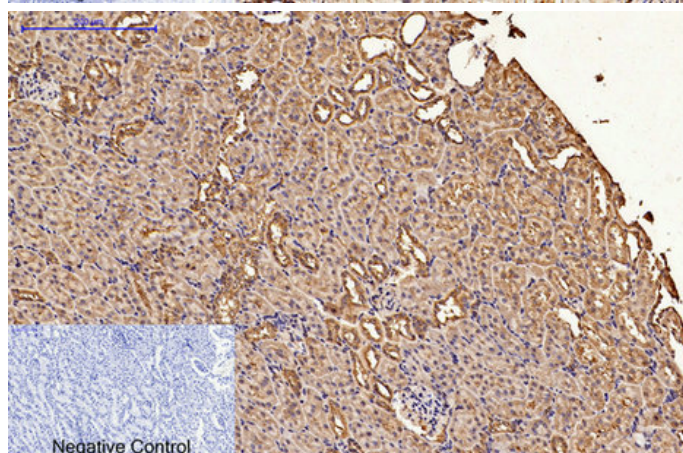
CDX2 Monoclonal Antibody(14H6)

Catalog_no :	AM3057
Applications :	WB,IF,IHC-p
Reactivity :	Human,Mouse,Rat
Category :	抗原抗体
Size :	100µg/50µg
Gene_name :	CDX2
Protein_name :	Homeobox protein CDX-2
Humangene_id :	1045
Humanswissprot_no :	Q99626
Mousegene_id :	12591
Mouseswissprot_no :	P43241
Ratswissprot_no :	
Immunogen :	Synthetic Peptide of CDX2
Specificity :	The antibody detects endogenous CDX2 proteins.
Formulation :	PBS, pH 7.4, containing 0.02% sodium azide as Preservative and 50% Glycerol.
Source :	Mouse
Dilution :	WB: 1:1000 IHC: 1:200 IF 1:200
Purification :	The antibody was affinity-purified from mouse ascites by affinity-chromatography using specific immunogen.
Storage_stability :	-20°C/1 year
Msds :	MSDS_Antibody.pdf
Other_name :	CDX2; CDX3; Homeobox protein CDX-2; CDX-3; Caudal-type homeobox protein 2
Molecular Weight :	42KD

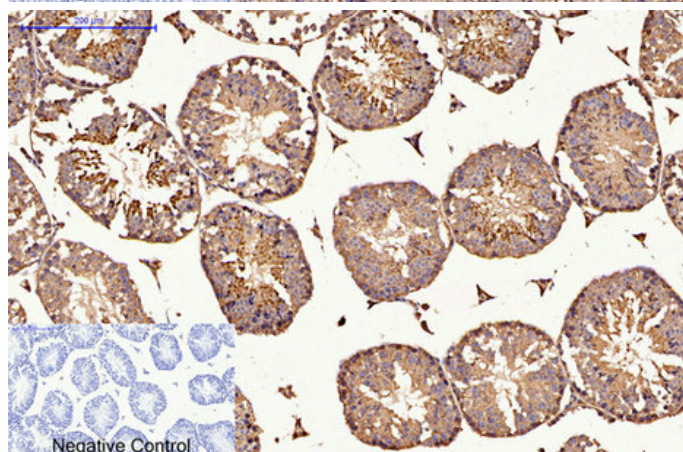
Product Images



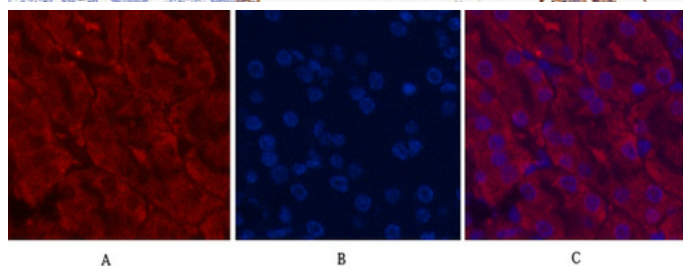
Immunohistochemical analysis of paraffin-embedded Human-colon tissue. 1,CDX2 Monoclonal Antibody(14H6) was diluted at 1:200(4°C,overnight). 2, Sodium citrate pH 6.0 was used for antibody retrieval(>98°C,20min). 3,Secondary antibody was diluted at 1:200(room temperature, 30min). Negative control was used by secondary antibody only.



Immunohistochemical analysis of paraffin-embedded Rat-kidney tissue. 1,CDX2 Monoclonal Antibody(14H6) was diluted at 1:200(4°C,overnight). 2, Sodium citrate pH 6.0 was used for antibody retrieval(>98°C,20min). 3,Secondary antibody was diluted at 1:200(room temperature, 30min). Negative control was used by secondary antibody only.

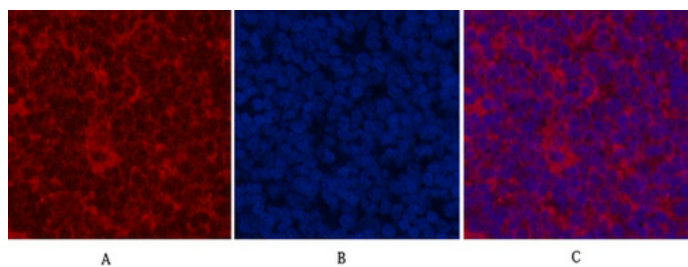


Immunohistochemical analysis of paraffin-embedded Mouse-testis tissue. 1,CDX2 Monoclonal Antibody(14H6) was diluted at 1:200(4°C,overnight). 2, Sodium citrate pH 6.0 was used for antibody retrieval(>98°C,20min). 3,Secondary antibody was diluted at 1:200(room temperature, 30min). Negative control was used by secondary antibody only.

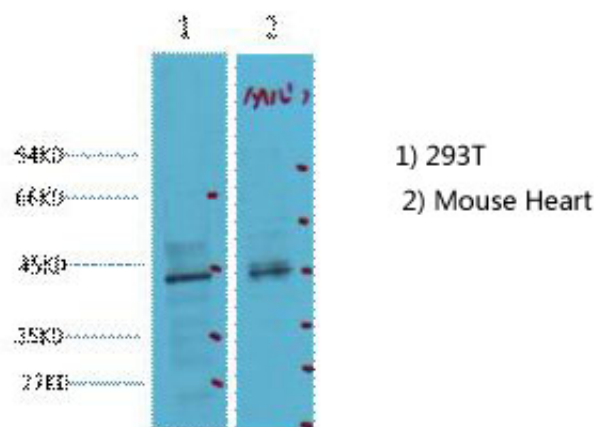


Immunofluorescence analysis of Mouse-kidney tissue. 1,CDX2 Monoclonal Antibody(14H6)(red) was diluted at 1:200(4°C,overnight). 2, Cy3 labeled Secondary antibody was diluted at 1:300(room temperature, 50min).3, Picture B: DAPI(blue) 10min. Picture A:Target. Picture C: DAPI. Picture C: merge of A+B

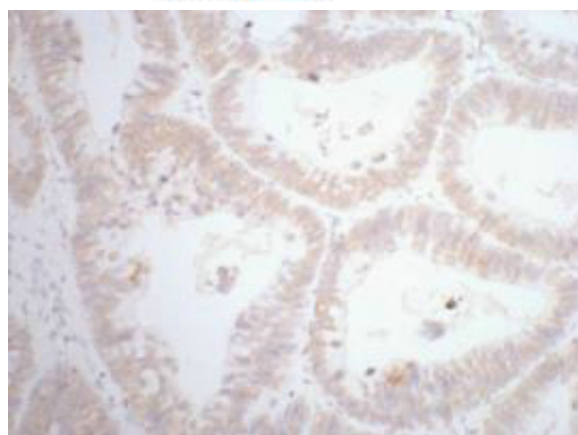
Immunofluorescence analysis of Rat-spleen tissue. 1,CDX2 Monoclonal Antibody(14H6)(red) was diluted at 1:200(4°C,overnight). 2, Cy3 labeled Secondary antibody



was diluted at 1:300(room temperature, 50min).3,
Picture B: DAPI(blue) 10min. Picture A:Target. Picture B:
DAPI. Picture C: merge of A+B



Western blot analysis of 1) 293T, 2) Mouse Heart tissue,
diluted at 1:2000. cells nucleus extracted by Minute TM
Cytoplasmic and Nuclear Fractionation kit
(SC-003, Inventbiotech, MN, USA).



IHC staining of human rectal cancer tissue, diluted at
1:200.