



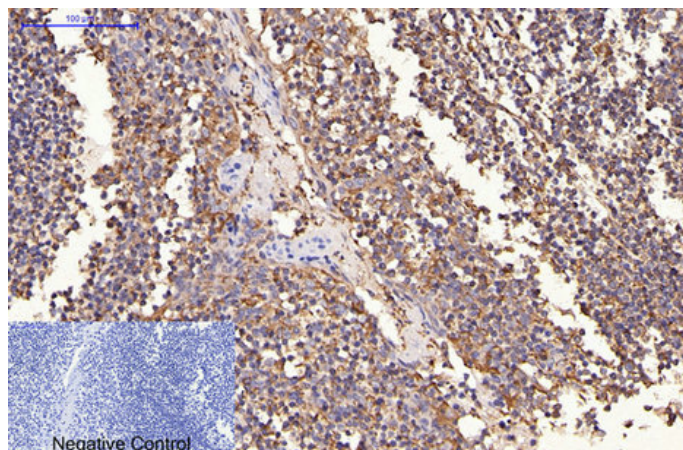
HER2 Monoclonal Antibody(11H9)

Catalog_no :	AM3045
Applications :	WB,IF,IHC-p
Reactivity :	Human,Mouse,Rat
Category :	抗原抗体
Size :	100µg/50µg
Gene_name :	ERBB2
Protein_name :	Receptor tyrosine-protein kinase erbB-2
Humangene_id :	2064
Humanswissprot_no :	P04626
Mousegene_id :	13866
Mouseswissprot_no :	P70424
Ratswissprot_no :	P06494
Immunogen :	Synthetic Peptide of HER2
Specificity :	The antibody detects endogenous ErbB-2/HER-2 proteins.
Formulation :	PBS, pH 7.4, containing 0.02% sodium azide as Preservative and 50% Glycerol.
Source :	Mouse
Dilution :	WB: 1:2000-4000 IHC: 1:200 IF 1:200
Purification :	The antibody was affinity-purified from mouse ascites by affinity-chromatography using specific immunogen.
Storage_stability :	-20°C/1 year
Msds :	MSDS_Antibody.pdf
Other_name :	ERBB2; HER2; MLN19; NEU; NGL; Receptor tyrosine-protein kinase erbB-2; Metastatic lymph node gene 19 protein; MLN 19; Proto-oncogene Neu; Proto-oncogene c-ErbB-2; Tyrosine kinase-type cell surface receptor HER2; p185erbB2; CD340
Molecular	180KD

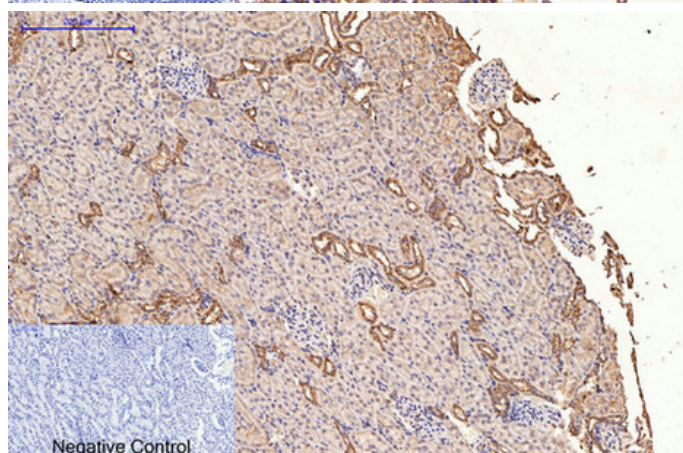


Weight :

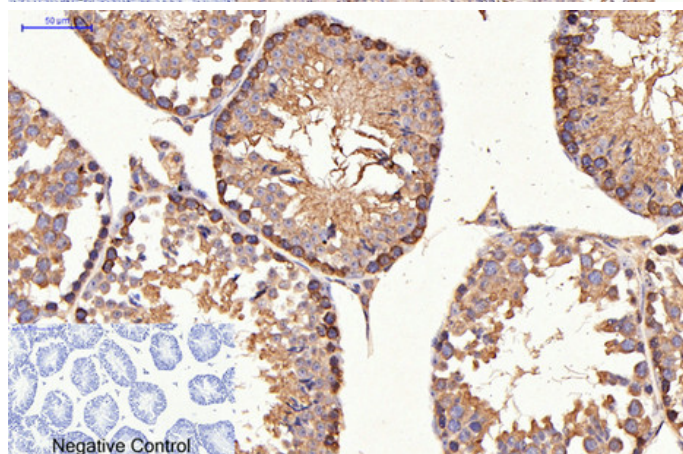
Product Images



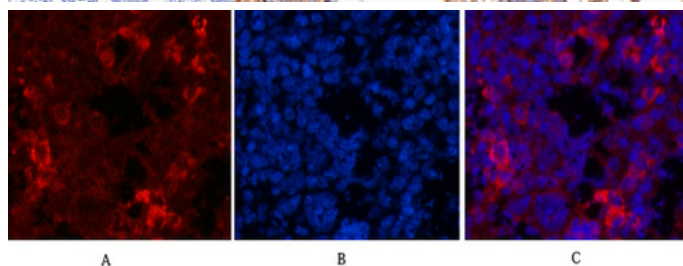
Immunohistochemical analysis of paraffin-embedded Human-Tonsil tissue. 1,HER2 Monoclonal Antibody(11H9) was diluted at 1:200(4°C,overnight). 2, Sodium citrate pH 6.0 was used for antibody retrieval(>98°C,20min). 3,Secondary antibody was diluted at 1:200(room temperature, 30min). Negative control was used by secondary antibody only.



Immunohistochemical analysis of paraffin-embedded Rat-kidney tissue. 1,HER2 Monoclonal Antibody(11H9) was diluted at 1:200(4°C,overnight). 2, Sodium citrate pH 6.0 was used for antibody retrieval(>98°C,20min). 3,Secondary antibody was diluted at 1:200(room temperature, 30min). Negative control was used by secondary antibody only.

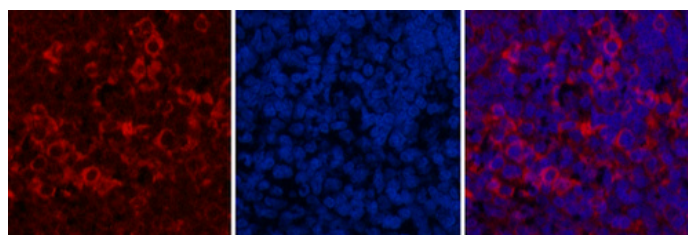


Immunohistochemical analysis of paraffin-embedded Mouse-testis tissue. 1,HER2 Monoclonal Antibody(11H9) was diluted at 1:200(4°C,overnight). 2, Sodium citrate pH 6.0 was used for antibody retrieval(>98°C,20min). 3,Secondary antibody was diluted at 1:200(room temperature, 30min). Negative control was used by secondary antibody only.

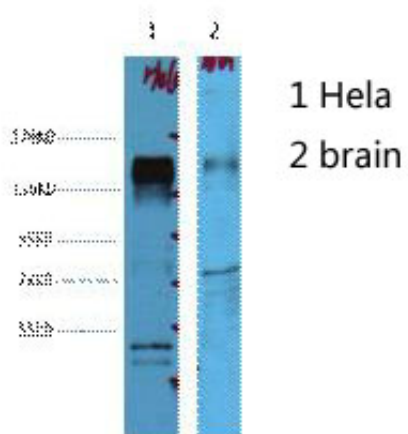


Immunofluorescence analysis of Mouse-spleen tissue. 1,HER2 Monoclonal Antibody(11H9)(red) was diluted at 1:200(4°C,overnight). 2, Cy3 labeled Secondary antibody was diluted at 1:300(room temperature, 50min).3, Picture B: DAPI(blue) 10min. Picture A:Target. Picture B: DAPI. Picture C: merge of A+B

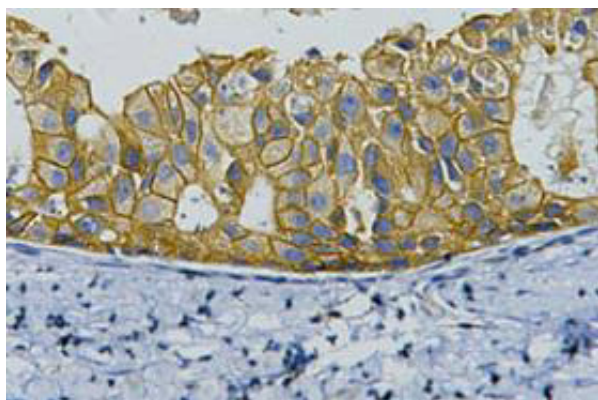
Immunofluorescence analysis of Rat-spleen tissue. 1,HER2 Monoclonal Antibody(11H9)(red) was diluted at 1:200(4°C,overnight). 2, Cy3 labeled Secondary antibody



was diluted at 1:300(room temperature, 50min).3,
Picture B: DAPI(blue) 10min. Picture A:Target. Picture B:
DAPI. Picture C: merge of A+B



Western blot analysis of 1) HeLa, 2) Mouse Brain, diluted
at 1:4000.



IHC staining of human breast cancer tissue, diluted at
1:200.