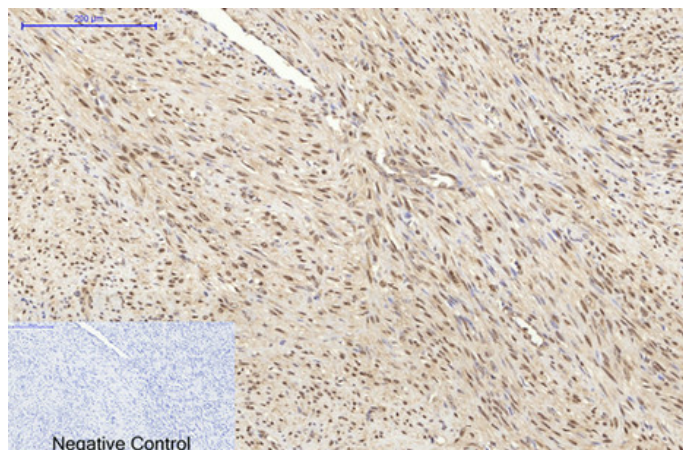




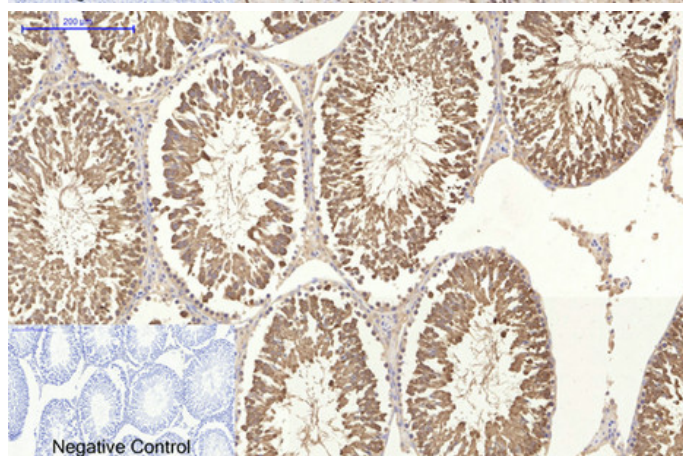
HSP70 Monoclonal Antibody(3G10)

Catalog_no :	AM3042
Applications :	WB,IHC-p,IF
Reactivity :	Human,Mouse,Rat
Category :	抗原抗体
Size :	100µg/50µg
Gene_name :	HSPA1L/HSPA1A
Protein_name :	Heat shock 70 kDa protein 1-like/Heat shock 70 kDa protein 1A/1B
Humangene_id :	3305/3303/3304
Humanswissprot_no :	P34931/P08107
Mousegene_id :	15482/193740
Ratgene_id :	24963/24472
Ratswissprot_no :	P55063/Q07439
Immunogen :	Synthetic Peptide of HSP70
Specificity :	The antibody detects endogenous HSP70 proteins.
Formulation :	PBS, pH 7.4, containing 0.02% sodium azide as Preservative and 50% Glycerol.
Source :	Mouse
Dilution :	WB: 1:1000-2000 IF: 1:100-200 IHC 1:50-300
Purification :	The antibody was affinity-purified from mouse ascites by affinity-chromatography using specific immunogen.
Storage_stability :	-20°C/1 year
Msds :	MSDS_Antibody.pdf
Molecular Weight :	70KD

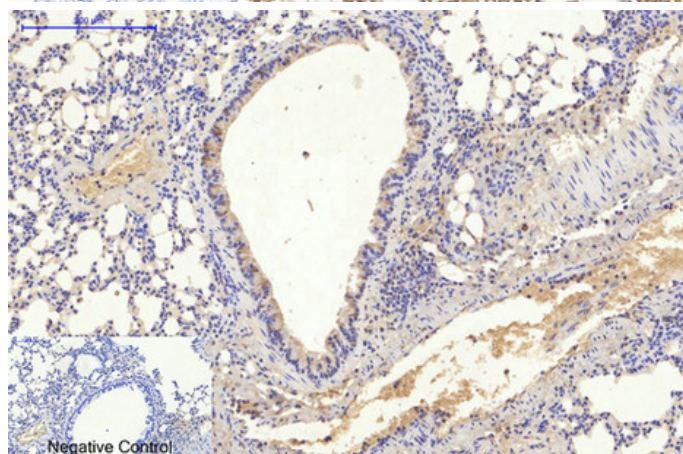
Product Images



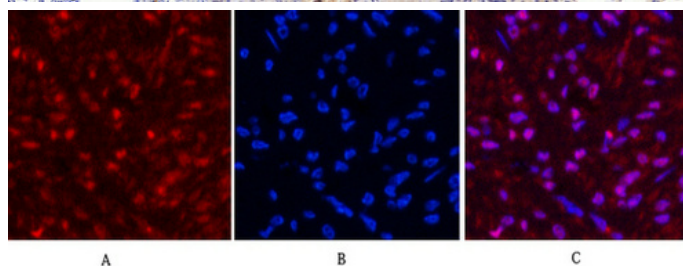
Immunohistochemical analysis of paraffin-embedded Human-uterus-cancer tissue. 1,HSP70 Monoclonal Antibody(3G10) was diluted at 1:200(4°C,overnight). 2, Sodium citrate pH 6.0 was used for antibody retrieval(>98°C,20min). 3,Secondary antibody was diluted at 1:200(room temperature, 30min). Negative control was used by secondary antibody only.



Immunohistochemical analysis of paraffin-embedded Rat-testis tissue. 1,HSP70 Monoclonal Antibody(3G10) was diluted at 1:200(4°C,overnight). 2, Sodium citrate pH 6.0 was used for antibody retrieval(>98°C,20min). 3,Secondary antibody was diluted at 1:200(room temperature, 30min). Negative control was used by secondary antibody only.

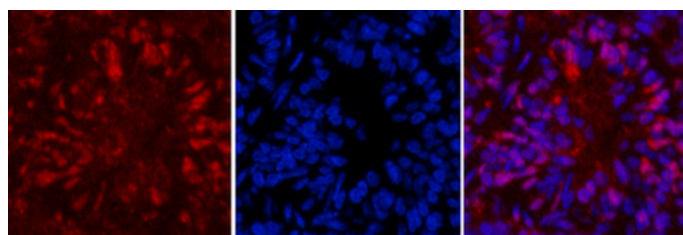


Immunohistochemical analysis of paraffin-embedded Mouse-lung tissue. 1,HSP70 Monoclonal Antibody(3G10) was diluted at 1:200(4°C,overnight). 2, Sodium citrate pH 6.0 was used for antibody retrieval(>98°C,20min). 3,Secondary antibody was diluted at 1:200(room temperature, 30min). Negative control was used by secondary antibody only.



Immunofluorescence analysis of Human-breast-cancer tissue. 1,HSP70 Monoclonal Antibody(3G10)(red) was diluted at 1:200(4°C,overnight). 2, Cy3 labled Secondary antibody was diluted at 1:300(room temperature, 50min).3, Picture B: DAPI(blue) 10min. Picture A:Target. Picture B: DAPI. Picture C: merge of A+B

Immunofluorescence analysis of Mouse-lung tissue. 1,HSP70 Monoclonal Antibody(3G10)(red) was diluted at 1:200(4°C,overnight). 2, Cy3 labled Secondary antibody

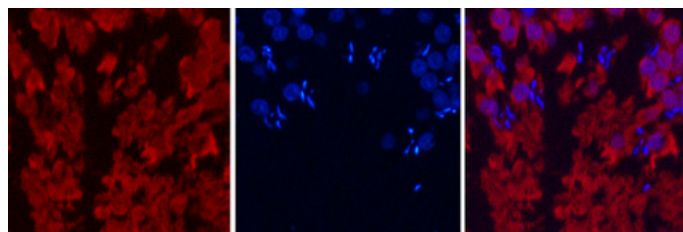


A

B

C

was diluted at 1:300(room temperature, 50min).3, Picture B: DAPI(blue) 10min. Picture A:Target. Picture B: DAPI. Picture C: merge of A+B

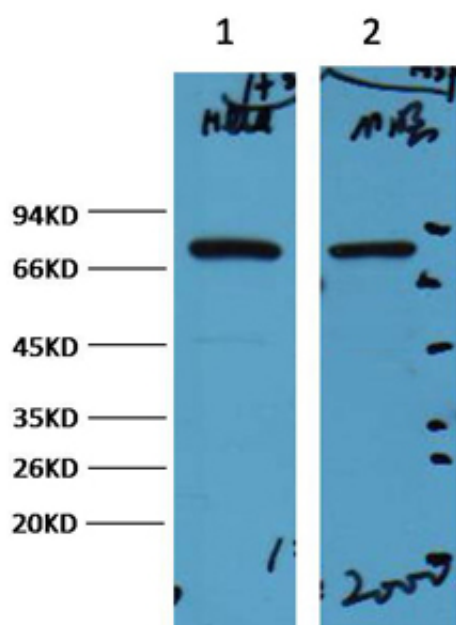


A

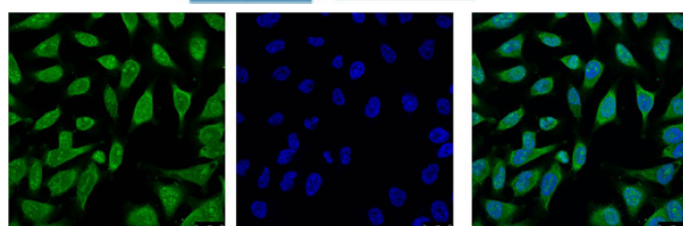
B

C

Immunofluorescence analysis of Rat-testis tissue. 1,HSP70 Monoclonal Antibody(3G10)(red) was diluted at 1:200(4°C,overnight). 2, Cy3 labeled Secondary antibody was diluted at 1:300(room temperature, 50min).3, Picture B: DAPI(blue) 10min. Picture A:Target. Picture B: DAPI. Picture C: merge of A+B

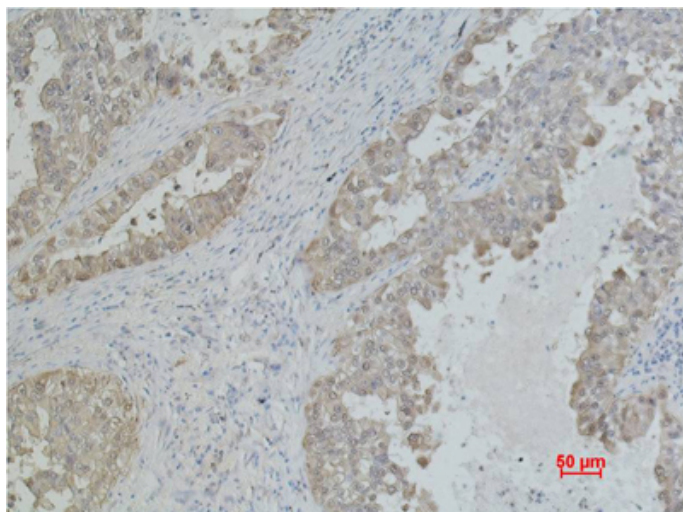


Western blot analysis of 1) Hela, 2) Mouse Brain, diluted at 1:2000.

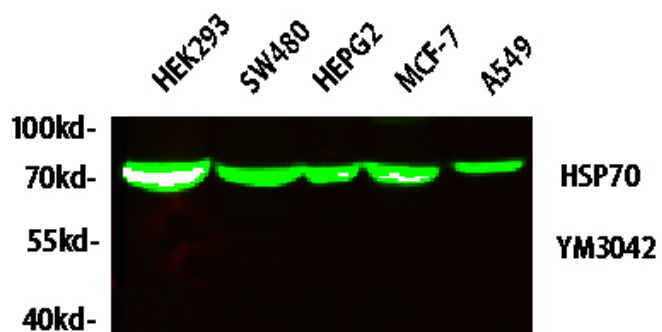
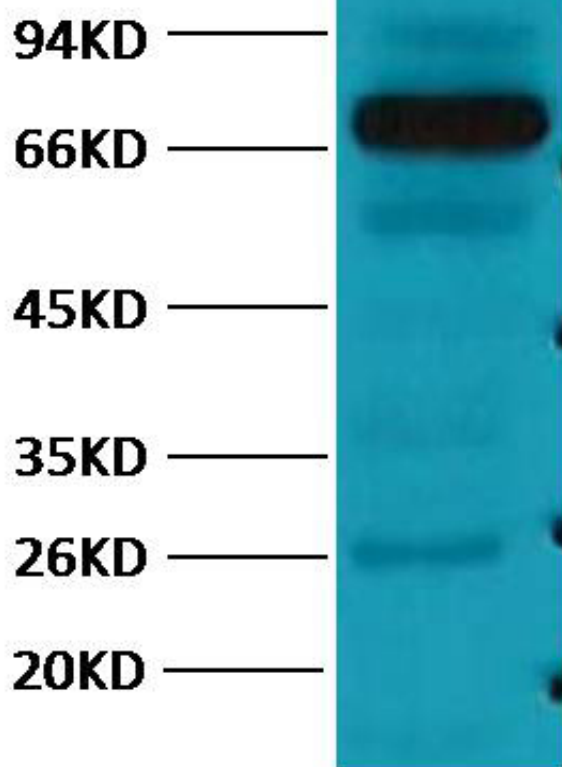


IF analysis of Hela with antibody (Left) and DAPI (Right) diluted at 1:100.

Immunohistochemical analysis of paraffin-embedded Human Lung carcinoma using Mouse mAb diluted at 1:500.



Western blot analysis of Pig Skeletal Muscle with HSP70 mAb diluted at 1:2,000.



Western blot analysis of lysates from HT-29, NIH/3T3, and HepG2 cells, primary antibody was diluted at 1:1000, 4° over night, secondary antibody(cat : RS23910)was diluted at 1:10000, 37° 1hour.