



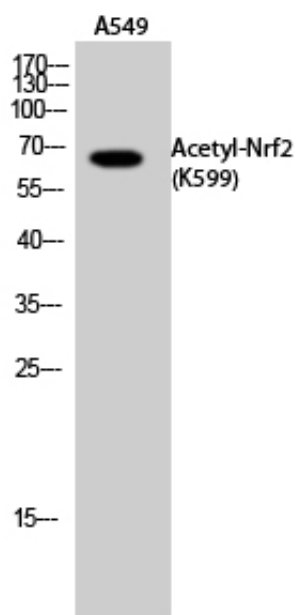
Nrf2 (Acetyl Lys599) Polyclonal Antibody

Catalog_no :	AK0063
Applications :	WB,IHC-p,ELISA
Reactivity :	Human,Mouse,Rat
Category :	抗原抗体
Size :	100µg/50µg/20µg
Gene_name :	NFE2L2
Protein_name :	Nuclear factor erythroid 2-related factor 2
Humangene_id :	4780
Humanswissprot_no :	Q16236
Mousegene_id :	18024
Mouseswissprot_no :	Q60795
Ratgene_id :	83619
Ratswissprot_no :	O54968
Immunogen :	Synthesized acetyl-peptide derived from the C-terminal region of human Nrf2 around the acetylation site of K599.
Specificity :	Acetyl-Nrf2 (K599) Polyclonal Antibody detects endogenous levels of Nrf2 protein only when acetylation at K599.
Formulation :	Liquid in PBS containing 50% glycerol, 0.5% BSA and 0.02% sodium azide.
Source :	Rabbit
Dilution :	Western Blot: 1/500 - 1/2000. IHC-p: 1:100-300 ELISA: 1/10000. Not yet tested in other applications.
Purification :	The antibody was affinity-purified from rabbit antiserum by affinity-chromatography using epitope-specific immunogen.
Concentration :	1 mg/ml
Storage_stability :	-20°C/1 year

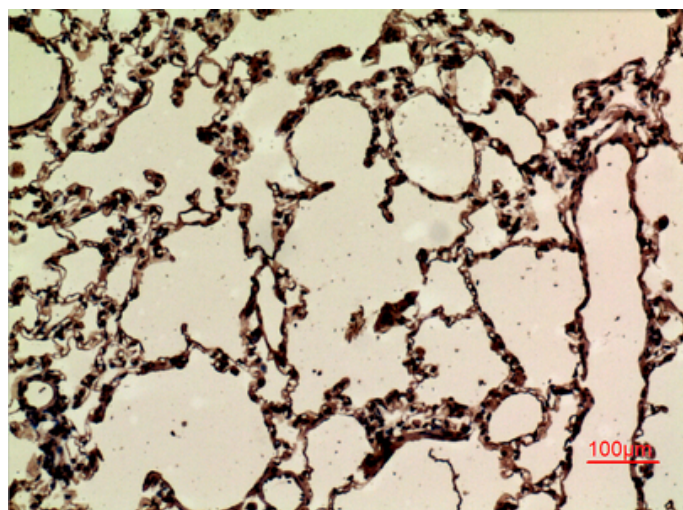


MsdS :	MSDS_Antibody.pdf
Other_name :	NFE2L2; NRF2; Nuclear factor erythroid 2-related factor 2; NF-E2-related factor 2; NFE2-related factor 2; HEBP1; Nuclear factor, erythroid derived 2, like 2
Molecular Weight :	75-100KD

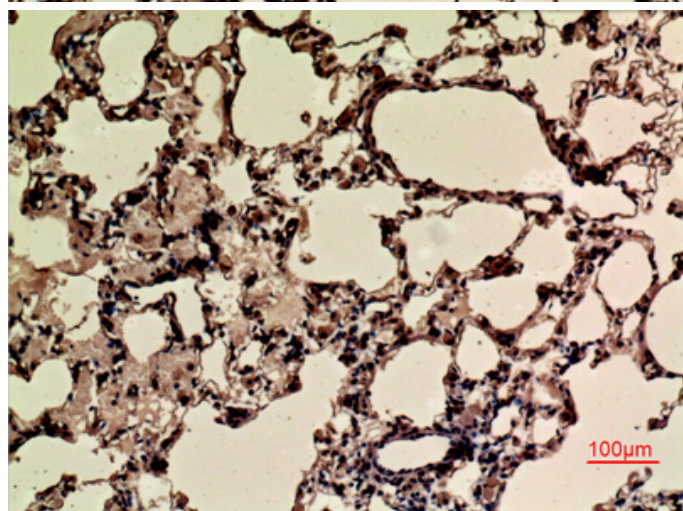
Product Images



Western Blot analysis of A549 cells using Acetyl-Nrf2 (K599) Polyclonal Antibody. Antibody was diluted at 1:1000. Secondary antibody was diluted at 1:20000

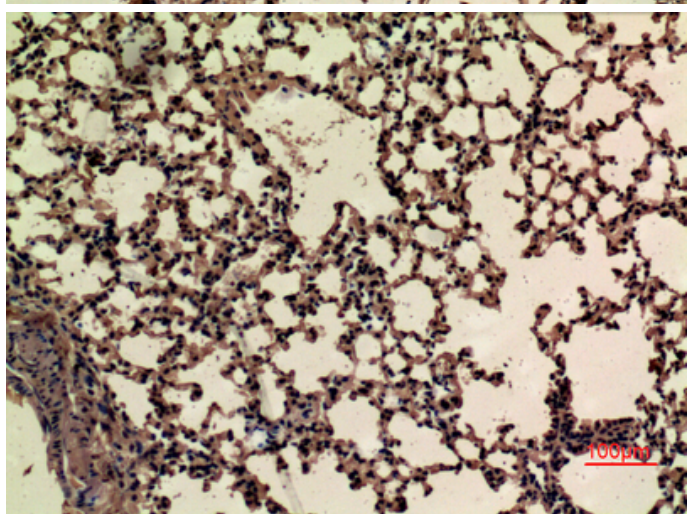
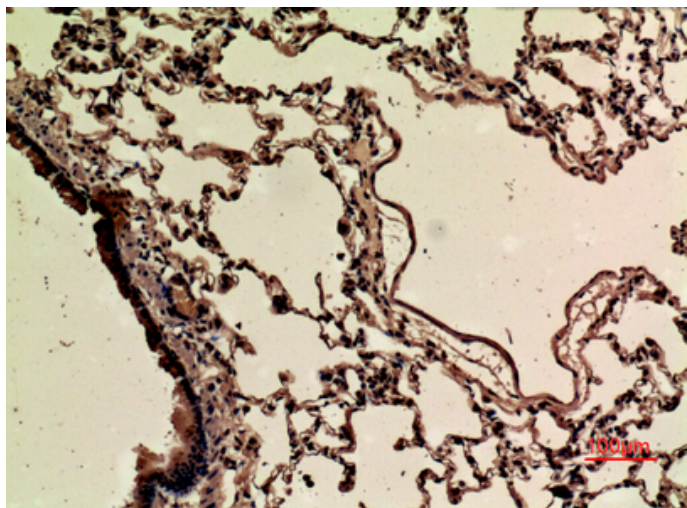


Immunohistochemical analysis of paraffin-embedded rat-lung, antibody was diluted at 1:100

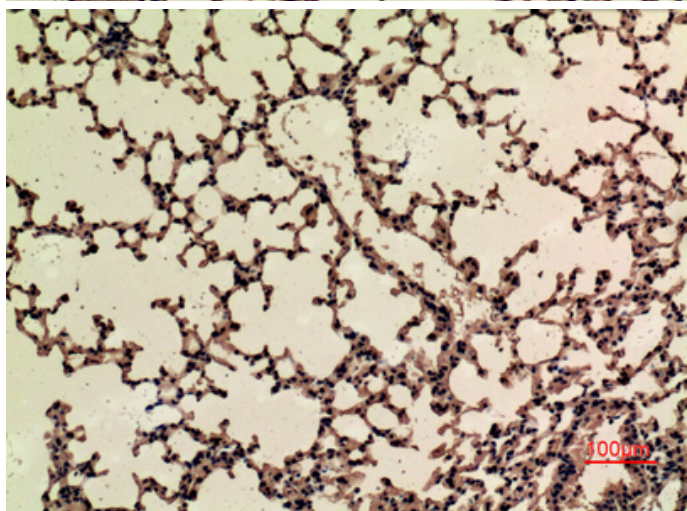


Immunohistochemical analysis of paraffin-embedded rat-lung, antibody was diluted at 1:100

Immunohistochemical analysis of paraffin-embedded rat-lung, antibody was diluted at 1:100



Immunohistochemical analysis of paraffin-embedded mouse-lung, antibody was diluted at 1:100



Immunohistochemical analysis of paraffin-embedded mouse-lung, antibody was diluted at 1:100

Immunohistochemical analysis of paraffin-embedded mouse-lung, antibody was diluted at 1:100

