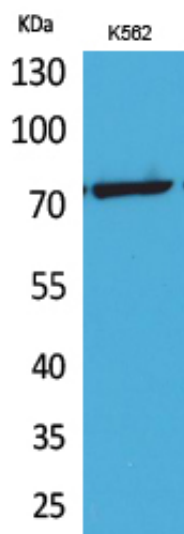




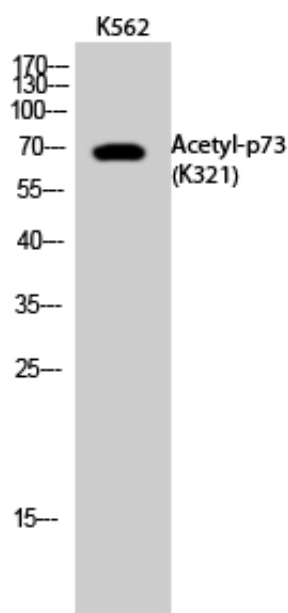
## p73 (Acetyl Lys321) Polyclonal Antibody

|                     |  |
|---------------------|--|
| Catalog_no :        | AK0037   |
| Applications :      | WB,IHC-p,ELISA   |
| Reactivity :        | Human  |
| Category :          | 抗原抗体   |
| Size :              | 100µg/50µg/20µg  |
| Gene_name :         | TP73   |
| Protein_name :      | Tumor protein p73  |
| Humangene_id :      | <a href="#">7161</a>   |
| Humanswissprot_no : | <a href="#">Q15350</a>   |
| Immunogen :         | The antiserum was produced against synthesized Acetyl-peptide derived from human p73 around the Acetylation site of Lys321. AA range:281-330 |
| Specificity :       | Acetyl-p73 (K321) Polyclonal Antibody detects endogenous levels of p73 protein only when acetylated at K321.                                 |
| Formulation :       | Liquid in PBS containing 50% glycerol, 0.5% BSA and 0.02% sodium azide.  |
| Source :            | Rabbit   |
| Dilution :          | Western Blot: 1/500 - 1/2000. IHC-p: 1:100-300 ELISA: 1/20000. Not yet tested in other applications.   |
| Purification :      | The antibody was affinity-purified from rabbit antiserum by affinity-chromatography using epitope-specific immunogen.                        |
| Concentration :     | 1 mg/ml  |
| Storage_stability : | -20°C/1 year   |
| Msds :              | <a href="#">MSDS_Antibody.pdf</a>  |
| Other_name :        | TP73; P73; Tumor protein p73; p53-like transcription factor; p53-related protein   |
| Molecular Weight :  | 70KD   |

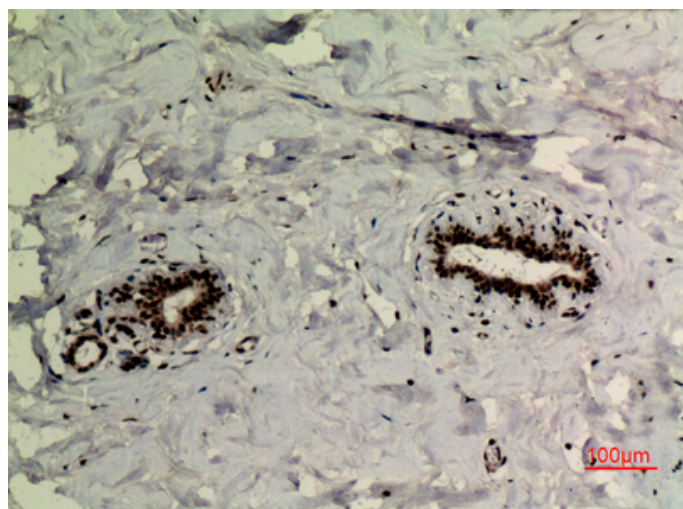
## Product Images



Western Blot analysis of K562 cells using Acetyl-p73 (K321) Polyclonal Antibody.. Secondary antibody was diluted at 1:20000

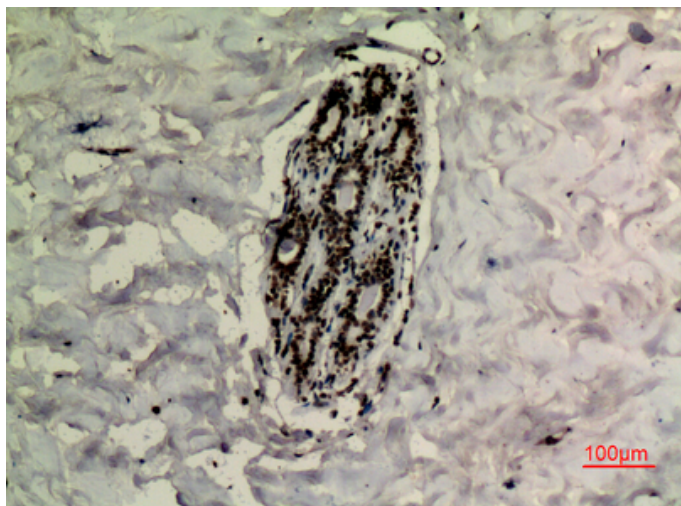


Western Blot analysis of K562 cells using Acetyl-p73 (K321) Polyclonal Antibody. Secondary antibody was diluted at 1:20000

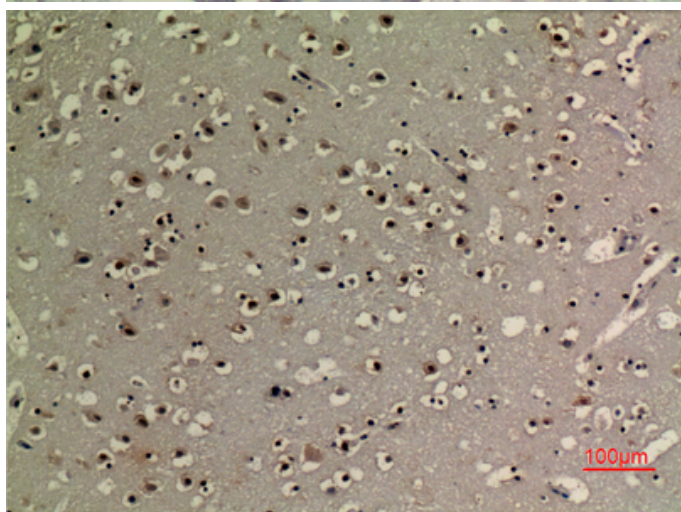


Immunohistochemical analysis of paraffin-embedded human-breast, antibody was diluted at 1:100

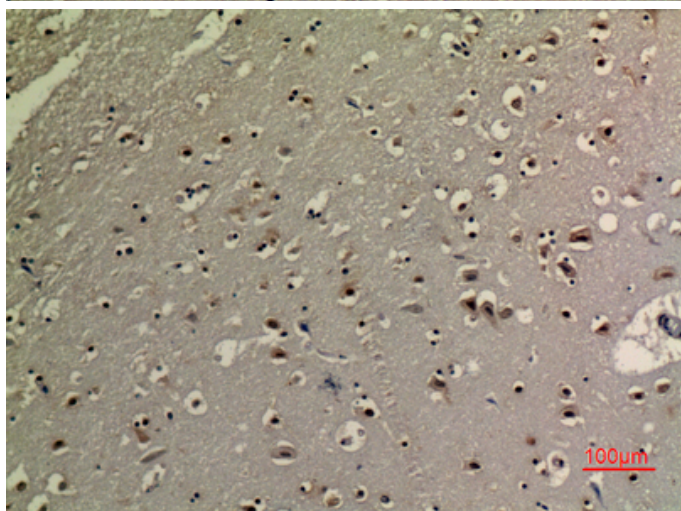
Immunohistochemical analysis of paraffin-embedded



human-breast, antibody was diluted at 1:100



Immunohistochemical analysis of paraffin-embedded human-brain, antibody was diluted at 1:100



Immunohistochemical analysis of paraffin-embedded human-brain, antibody was diluted at 1:100