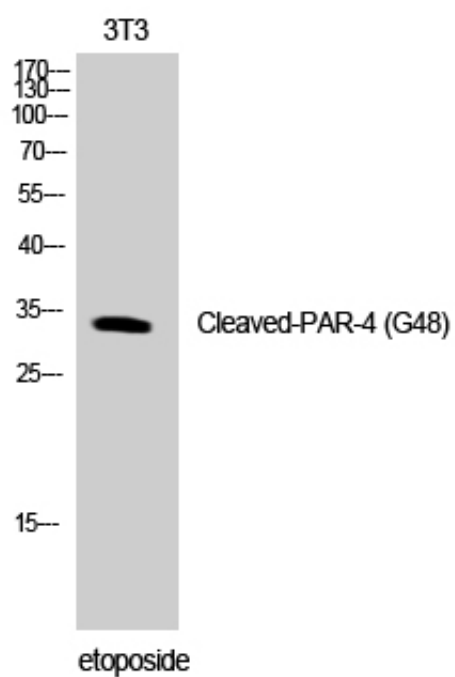




## Cleaved-PAR-4 (G48) Polyclonal Antibody

Catalog_no :	AC0072
Applications :	WB,ELISA
Reactivity :	Human
Category :	抗原抗体
Size :	100µg/50µg/20µg
Gene_name :	F2RL3
Protein_name :	Proteinase-activated receptor 4
Humangene_id :	<a href="#">9002</a>
Humanswissprot_no :	<a href="#">Q96RI0</a>
Immunogen :	The antiserum was produced against synthesized peptide derived from human PAR4. AA range:29-78
Specificity :	Cleaved-PAR-4 (G48) Polyclonal Antibody detects endogenous levels of fragment of activated PAR-4 protein resulting from cleavage adjacent to G48.
Formulation :	Liquid in PBS containing 50% glycerol, 0.5% BSA and 0.02% sodium azide.
Source :	Rabbit
Dilution :	Western Blot: 1/500 - 1/2000. ELISA: 1/5000. Not yet tested in other applications.
Purification :	The antibody was affinity-purified from rabbit antiserum by affinity-chromatography using epitope-specific immunogen.
Concentration :	1 mg/ml
Storage_stability :	-20°C/1 year
Msds :	<a href="#">MSDS_Antibody.pdf</a>
Other_name :	F2RL3; PAR4; Proteinase-activated receptor 4; PAR-4; Coagulation factor II receptor-like 3; Thrombin receptor-like 3
Molecular Weight :	33KD

## Product Images



Western Blot analysis of NIH-3T3 cells using Cleaved-PAR-4 (G48) Polyclonal Antibody