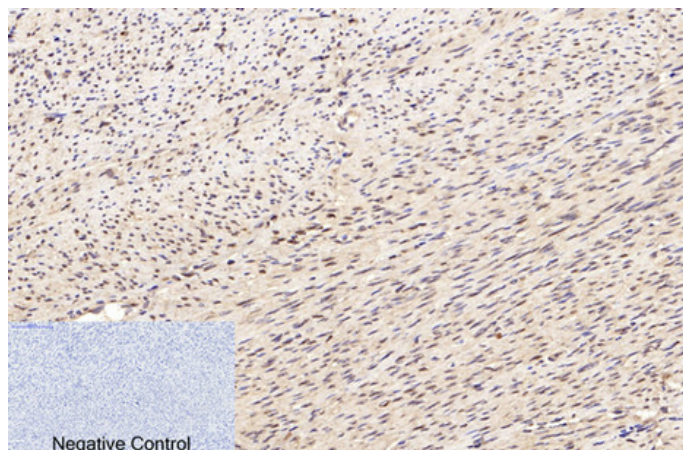




## Lamin B1 Monoclonal Antibody(7C11)

Catalog_no :	A1053
Applications :	WB,IHC-p,IF,IP
Reactivity :	Human,Rat,Mouse
Category :	抗原抗体
Size :	50μl/100μl
Immunogen :	Recombinant Protein of Lamin-B1
Specificity :	The antibody detects endogenous Lamin B1 protein.
Formulation :	PBS, pH 7.4, containing 0.02% sodium azide as Preservative and 50% Glycerol.
Source :	Mouse
Dilution :	WB: 1:2000-5000 IP:1:200 IF 1:200 IHC 1:50-300
Purification :	The antibody was affinity-purified from mouse ascites by affinity-chromatography using specific immunogen.
Concentration :	1 mg/ml
Molecular Weight :	68KD
Storage buffer :	PBS,pH 7.4,containing 0.02% sodium azide as Preservative and 50% Glycerol
Store at :	-20°C.Do not aliquot the antibody,For research use only
Background :	The nuclear lamina consists of a two-dimensional matrix of proteins located next to the innernuclear membrane. The lamin family of proteins make up the matrix and are highly conserved in evolution. Duringmitosis, the lamina matrix is reversibly dis

## Product Images



Immunohistochemical analysis of paraffin-embedded Human-uterus tissue. 1,Lamin B1 Monoclonal Antibody(7C11) was diluted at 1:200(4°C,overnight). 2, Sodium citrate pH 6.0 was used for antibody retrieval(>98°C,20min). 3,Secondary antibody was diluted at 1:200(room temperature, 30min). Negative control was used by secondary antibody only.