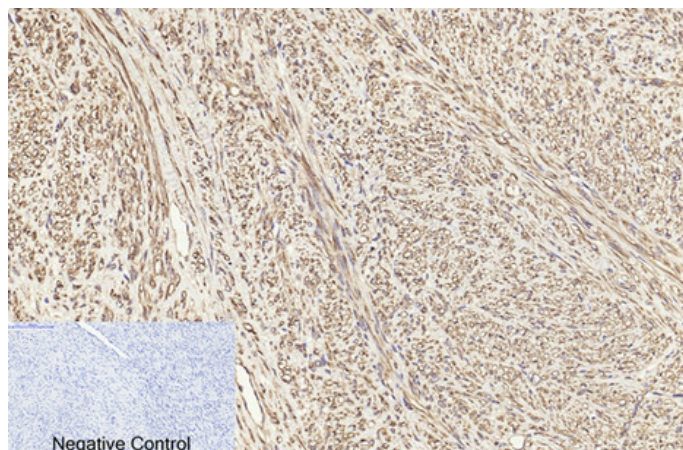




## $\beta$ I tubulin Monoclonal Antibody(3F7)

Catalog_no :	A1054
Applications :	WB,IHC-p,IF,
Reactivity :	Human,Rat,Mouse
Category :	抗原抗体
Size :	50 $\mu$ l/100 $\mu$ l
Immunogen :	Synthetic Peptide of $\beta$ I tubulin
Specificity :	The antibody detects endogenous $\beta$ I tubulin proteins.
Formulation :	PBS, pH 7.4, containing 0.02% sodium azide as Preservative and 50% Glycerol.
Source :	Mouse
Dilution :	WB: 1:500-10000 IF 1:200 IHC 1:50-300
Purification :	The antibody was affinity-purified from mouse ascites by affinity-chromatography using specific immunogen.
Concentration :	1 mg/ml
Molecular Weight :	50KD
Storage buffer :	PBS,pH 7.4,containing 0.02% sodium azide as Preservative and 50% Glycerol
Store at :	-20°C.Do not aliquot the antibody,For research use only
Background :	Tubulin is one of several members of a small family of globular proteins. The tubulin superfamilyincludes five distinct families, the alpha-, beta-, gamma-, delta-, and epsilon-tubulins. The most commonmembers of the tubulin family are $\alpha$ -tubulin an

## Product Images



Immunohistochemical analysis of paraffin-embedded Human-uterus-cancer tissue. 1,  $\beta$  I tubulin Monoclonal Antibody(3F7) was diluted at 1:200(4°C, overnight). 2, Sodium citrate pH 6.0 was used for antibody retrieval(>98°C, 20min). 3, Secondary antibody was diluted at 1:200(room temperature, 30min). Negative control was used by secondary antibody only.